

# COVID-19 - Tabella dati al 17 mag 2020

**17052020**

*d e f g = d+e+f h i j=d+e+f+h+i*

AGGIORNAMENTO 17052020										
Regione / P.A.	POSITIVI AL nCoV				DIMESSI/ GUARITI	DECEDUTI	CASI TOTALI	INCREMENTO CASI TOTALI (rispetto al giorno precedente)	TAMPONI	% Casi attivi/Max
	Ricoverati con sintomi	Terapia intensiva	Isolamento domiciliare	Totale attualmente positivi						
Abruzzo	193	6	1.223	1.422	1.379	385	3.186	+ 8	57.217	33%
Basilicata	29	1	74	104	261	27	392	+ 2	22.167	63%
Calabria	56	2	364	422	634	95	1.151	+ 0	55.304	50%
Campania	342	17	1.337	1.696	2.592	396	4.684	+ 16	139.787	46%
Emilia-Romagna	721	111	4.824	5.656	17.603	3.973	27.232	+ 50	261.106	68%
Friuli Venezia Giulia	80	3	571	654	2.218	319	3.191	+ 8	104.056	71%
Lazio	1.150	74	2.686	3.910	2.914	622	7.446	+ 50	206.166	14%
Liguria	360	24	2.072	2.456	5.348	1.355	9.159	+ 48	80.154	54%
Lombardia	4.480	255	22.695	27.430	41.895	15.519	84.844	+ 326	576.359	35%
Marche	151	18	2.396	2.565	3.118	984	6.667	+ 25	88.656	31%
Molise	11	2	203	216	173	22	411	+ 1	11.085	6%
P.A. Bolzano	50	5	259	314	1.977	290	2.581	+ 3	54.428	84%
P.A. Trento	41	8	252	301	3.584	453	4.338	+ 12	69.659	92%
Piemonte	1.620	101	8.518	10.239	15.696	3.612	29.547	+ 64	249.371	35%
Puglia	263	21	1.733	2.017	1.892	470	4.379	+ 5	91.035	32%
Sardegna	76	10	319	405	823	125	1.353	+ 1	42.249	56%
Sicilia	145	13	1.397	1.555	1.566	267	3.388	+ 6	117.426	33%
Toscana	214	67	2.521	2.802	6.162	984	9.948	+ 35	204.022	58%
Umbria	25	2	51	78	1.273	73	1.424	+ 2	55.956	94%
Valle d'Aosta	31	0	37	68	962	143	1.173	+ 0	12.169	93%
Veneto	273	22	3.746	4.041	13.106	1.794	18.941	+ 13	506.588	69%
<b>TOTALE</b>	<b>10.311</b>	<b>762</b>	<b>57.278</b>	<b>68.351</b>	<b>125.176</b>	<b>31.908</b>	<b>225.435</b>	<b>+ 675</b>	<b>3.004.960</b>	<b>45%</b>
<i>Rispetto a ieri:</i>	<i>-89</i>	<i>-13</i>	<i>-1.734</i>	<i>-1.836</i>	<i>2.366</i>	<i>145</i>	<i>675</i>		<i>60.101</i>	

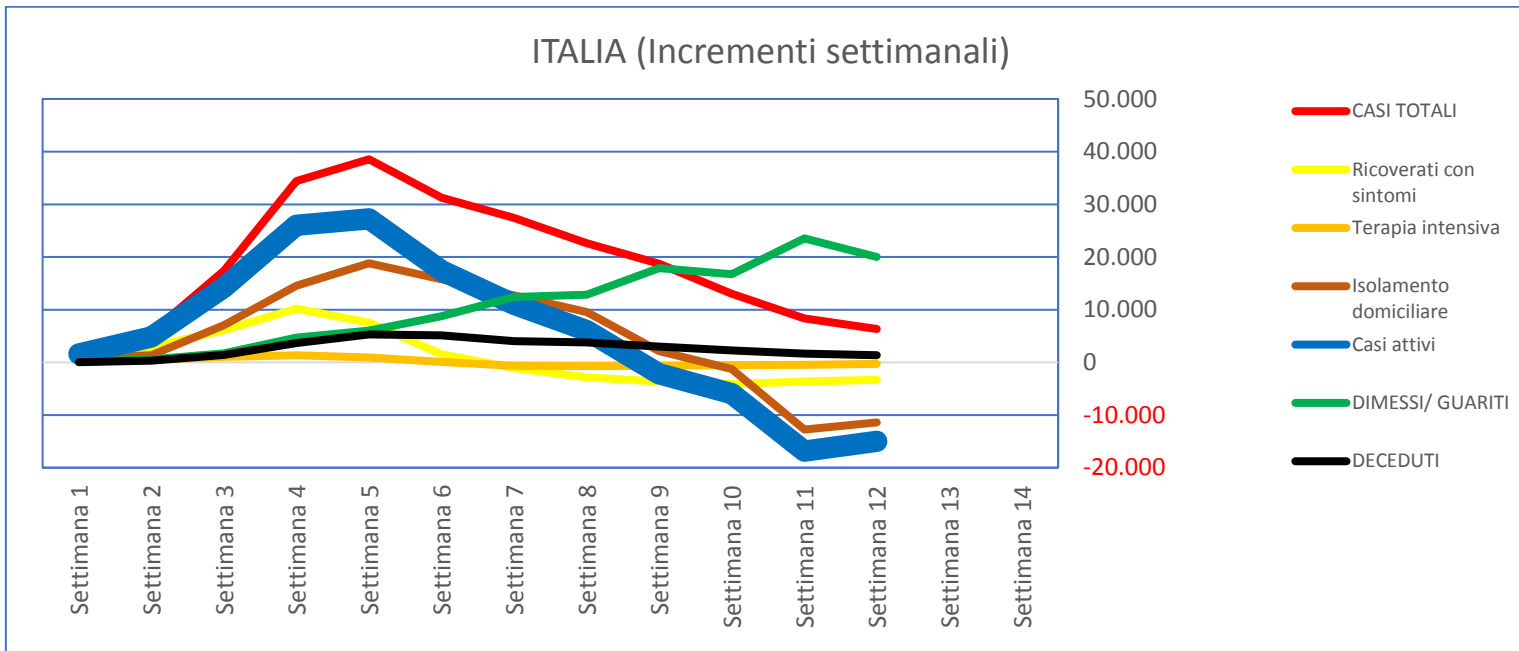
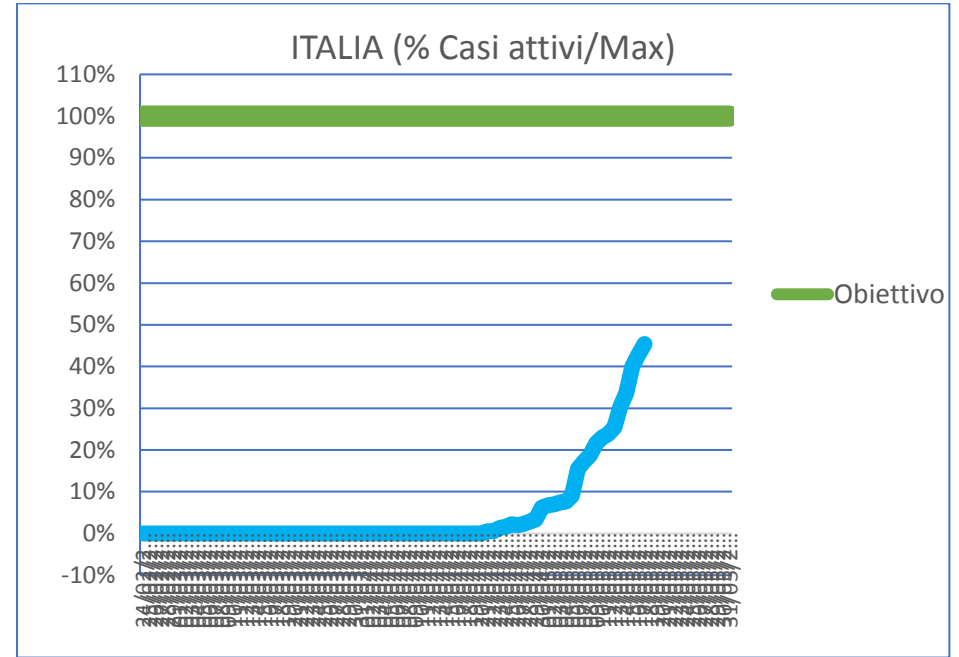
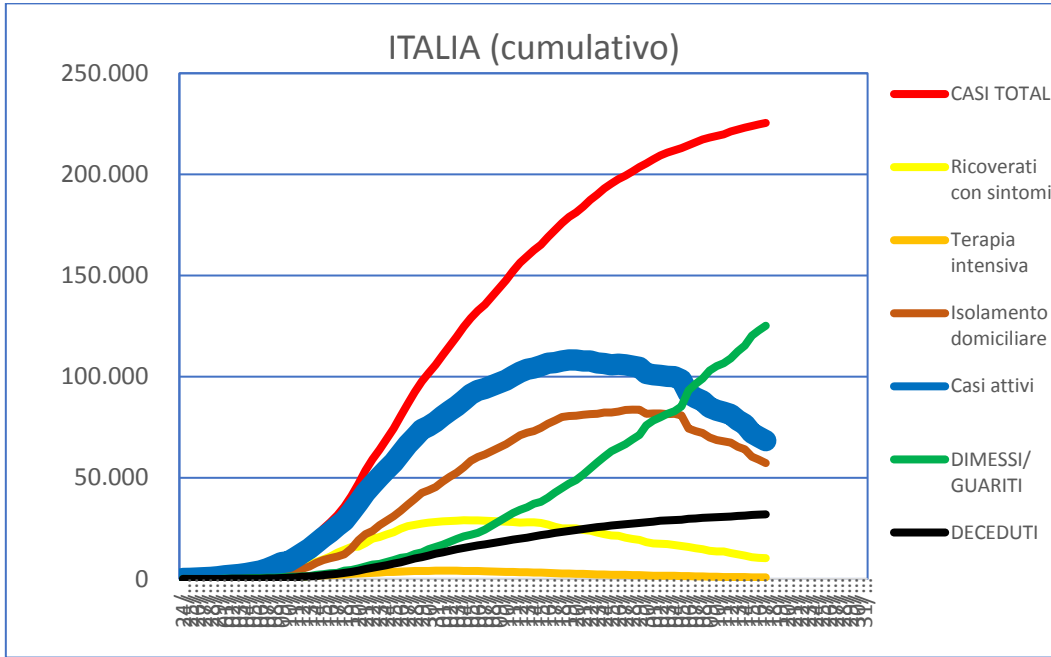
# Ripartizioni in percentuale

**17052020**

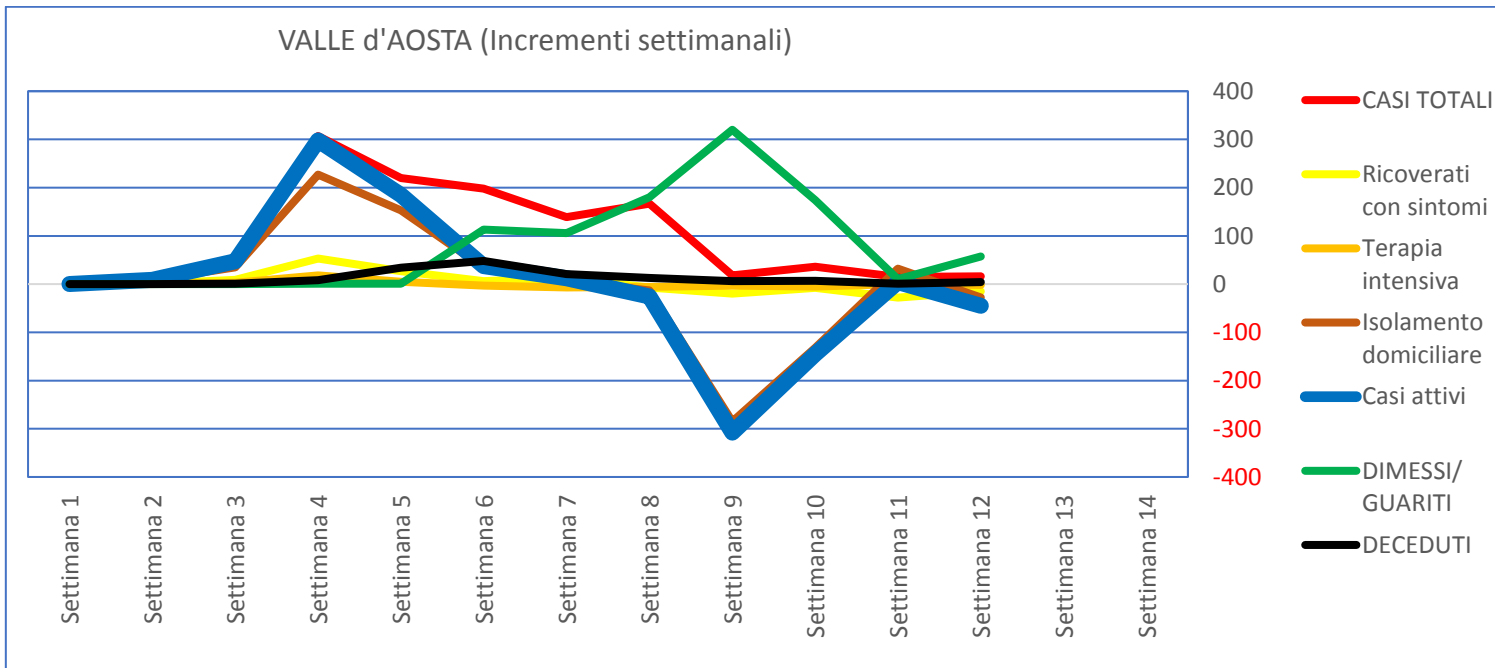
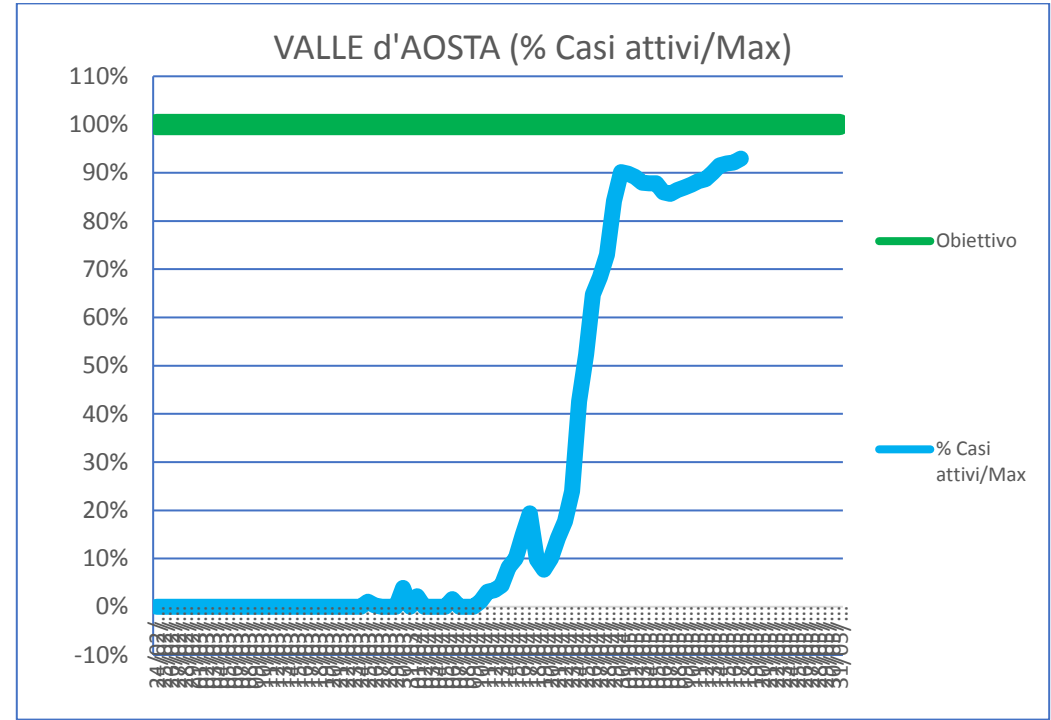
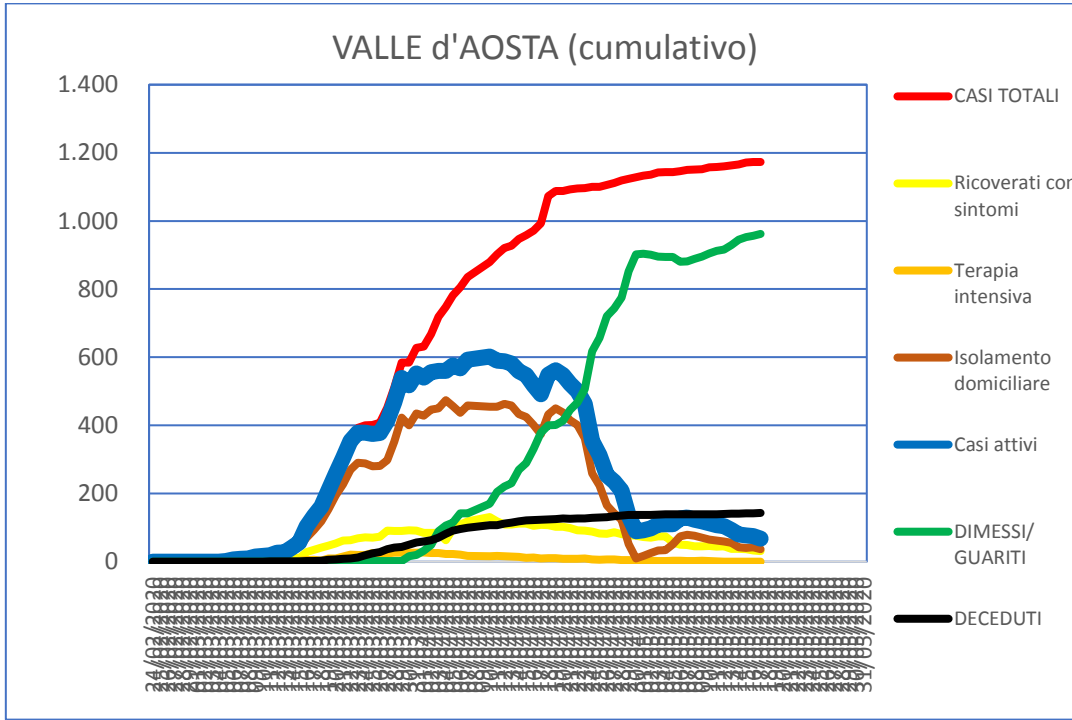
*d e f g = d+e+f h i*

AGGIORNAMENTO 17052020														
Regione / P.A.	POSITIVI AL nCoV					DECEDUTI	INCREMENTO CASI TOTALI (rispetto al giorno precedente)	Popolazione	CASI TOTALI	% Casi Totali/ Popol.	DECEDUTI	% Decessi/ Popol.	% Totale attualmente positivi / Popol.	TAMPONI
	Ricoverati con sintomi	Terapia intensiva	Isolamento domiciliare	Totale attualmente positivi	DIMESSI/ GUARITI									
Abruzzo	6,1%	0,2%	38,4%	44,6%	43,3%	12,1%	0,3%	1.322.247	3.186	0,24%	385	0,0291%	0,11%	4,33%
Basilicata	7,4%	0,3%	18,9%	26,5%	66,6%	6,9%	0,5%	570.365	392	0,07%	27	0,0047%	0,02%	3,89%
Calabria	4,9%	0,2%	31,6%	36,7%	55,1%	8,3%	0,0%	1.965.128	1.151	0,06%	95	0,0048%	0,02%	2,81%
Campania	7,3%	0,4%	28,5%	36,2%	55,3%	8,5%	0,3%	5.839.084	4.684	0,08%	396	0,0068%	0,03%	2,39%
Emilia-Romagna	2,6%	0,4%	17,7%	20,8%	64,6%	14,6%	0,2%	4.392.526	27.232	0,62%	3.973	0,0904%	0,13%	5,94%
Friuli Venezia Giulia	2,5%	0,1%	17,9%	20,5%	69,5%	10,0%	0,3%	1.217.872	3.191	0,26%	319	0,0262%	0,05%	8,54%
Lazio	15,4%	1,0%	36,1%	52,5%	39,1%	8,4%	0,7%	5.898.124	7.446	0,13%	622	0,0105%	0,07%	3,50%
Liguria	3,9%	0,3%	22,6%	26,8%	58,4%	14,8%	0,5%	1.565.307	9.159	0,59%	1.355	0,0866%	0,16%	5,12%
Lombardia	5,3%	0,3%	26,7%	32,3%	49,4%	18,3%	0,4%	10.060.574	84.844	0,84%	15.519	0,1543%	0,27%	5,73%
Marche	2,3%	0,3%	35,9%	38,5%	46,8%	14,8%	0,4%	1.538.055	6.667	0,43%	984	0,0640%	0,17%	5,76%
Molise	2,7%	0,5%	49,4%	52,6%	42,1%	5,4%	0,2%	310.449	411	0,13%	22	0,0071%	0,07%	3,57%
P.A. Bolzano	1,9%	0,2%	10,0%	12,2%	76,6%	11,2%	0,1%	515.714	2.581	0,50%	290	0,0562%	0,06%	10,55%
P.A. Trento	0,9%	0,2%	5,8%	6,9%	82,6%	10,4%	0,3%	4.063.888	4.338	0,11%	453	0,0111%	0,01%	1,71%
Piemonte	5,5%	0,3%	28,8%	34,7%	53,1%	12,2%	0,2%	4.459.477	29.547	0,66%	3.612	0,0810%	0,23%	5,59%
Puglia	6,0%	0,5%	39,6%	46,1%	43,2%	10,7%	0,1%	536.237	4.379	0,82%	470	0,0876%	0,38%	16,98%
Sardegna	5,6%	0,7%	23,6%	29,9%	60,8%	9,2%	0,1%	888.908	1.353	0,15%	125	0,0141%	0,05%	4,75%
Sicilia	4,3%	0,4%	41,2%	45,9%	46,2%	7,9%	0,2%	5.056.641	3.388	0,07%	267	0,0053%	0,03%	2,32%
Toscana	2,2%	0,7%	25,3%	28,2%	61,9%	9,9%	0,4%	3.742.437	9.948	0,27%	984	0,0263%	0,07%	5,45%
Umbria	1,8%	0,1%	3,6%	5,5%	89,4%	5,1%	0,1%	1.653.135	1.424	0,09%	73	0,0044%	0,00%	3,38%
Valle d'Aosta	2,6%	0,0%	3,2%	5,8%	82,0%	12,2%	0,0%	126.883	1.173	0,92%	143	0,1127%	0,05%	9,59%
Veneto	1,4%	0,1%	19,8%	21,3%	69,2%	9,5%	0,1%	4.907.529	18.941	0,39%	1.794	0,0366%	0,08%	10,32%
<b>TOTALE</b>	<b>4,6%</b>	<b>0,3%</b>	<b>25,4%</b>	<b>30,3%</b>	<b>55,5%</b>	<b>14,2%</b>	<b>0,3%</b>	<b>60.630.580</b>	<b>225.435</b>	<b>0,37%</b>	<b>31.908</b>	<b>0,0526%</b>	<b>0,11%</b>	<b>4,956%</b>

# Grafici regionali 17 mag 2020

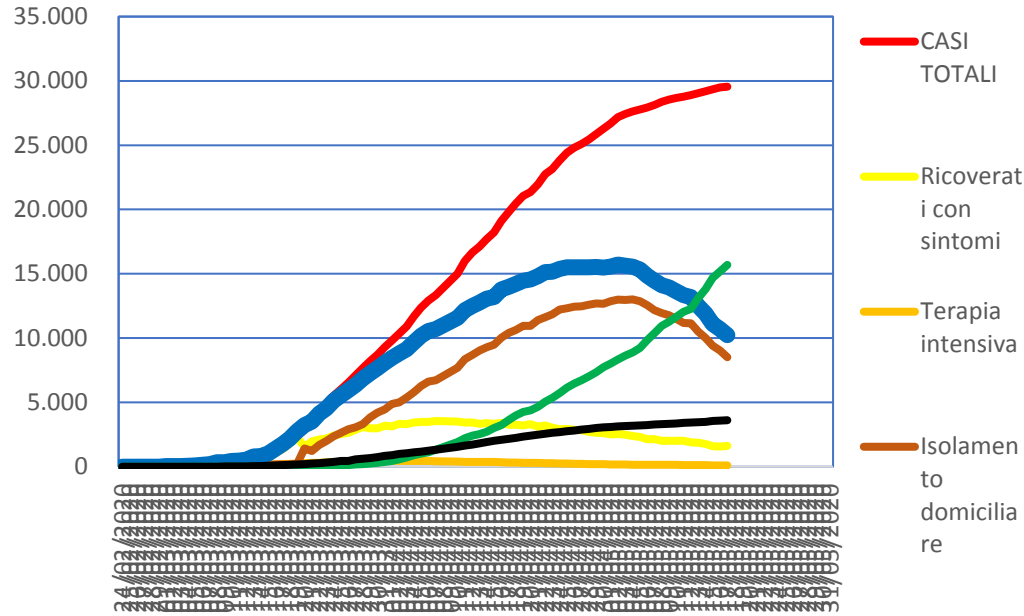


# VALLE d'AOSTA

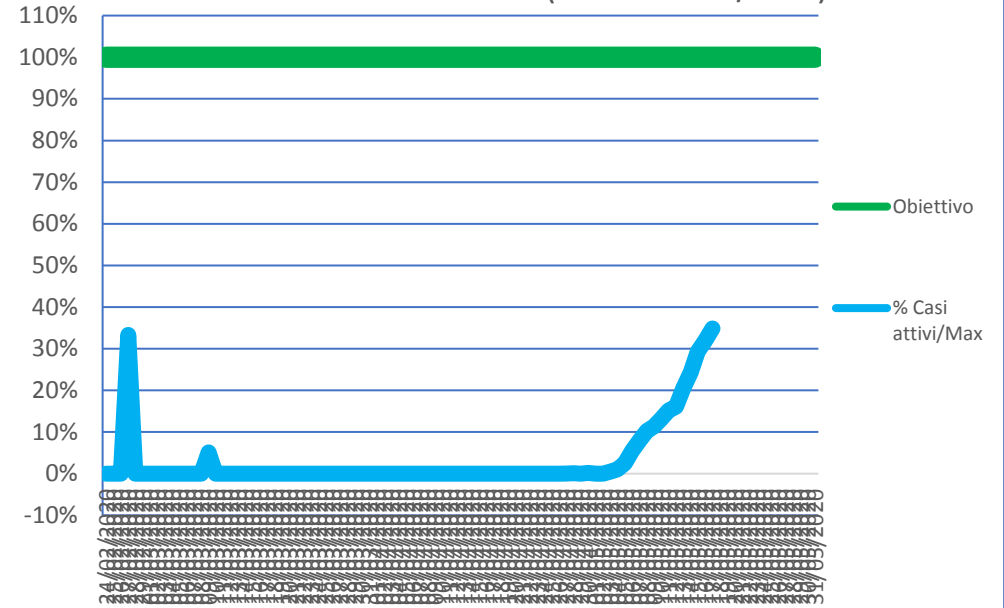


# PIEMONTE

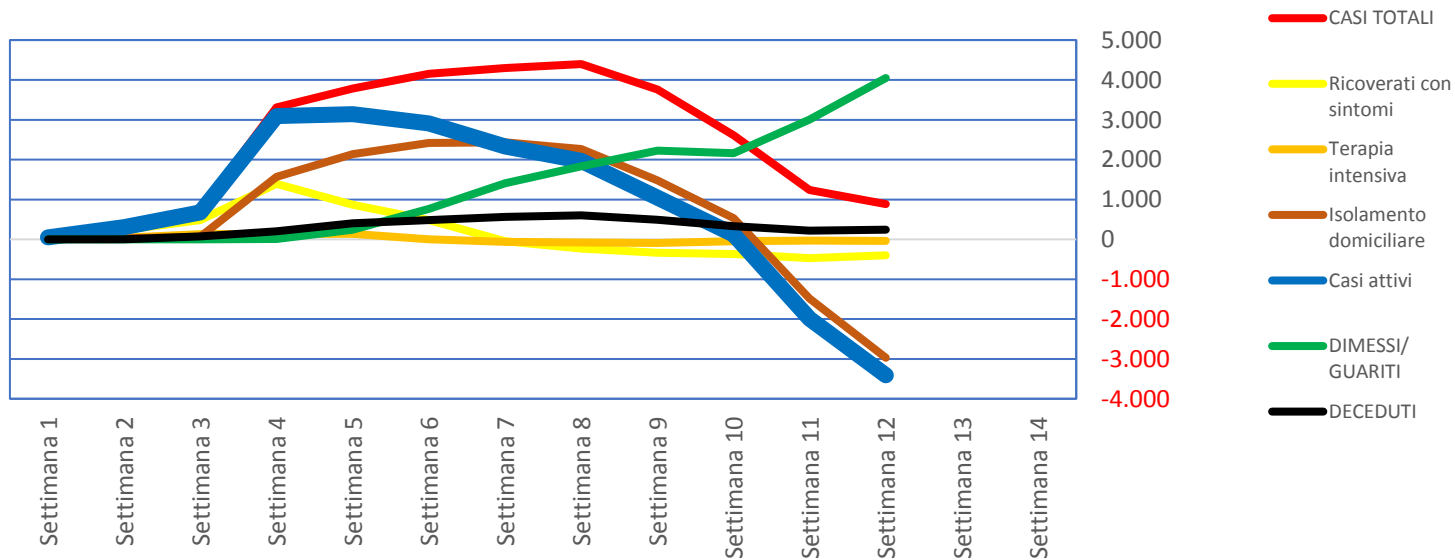
## PIEMONTE (cumulativo)



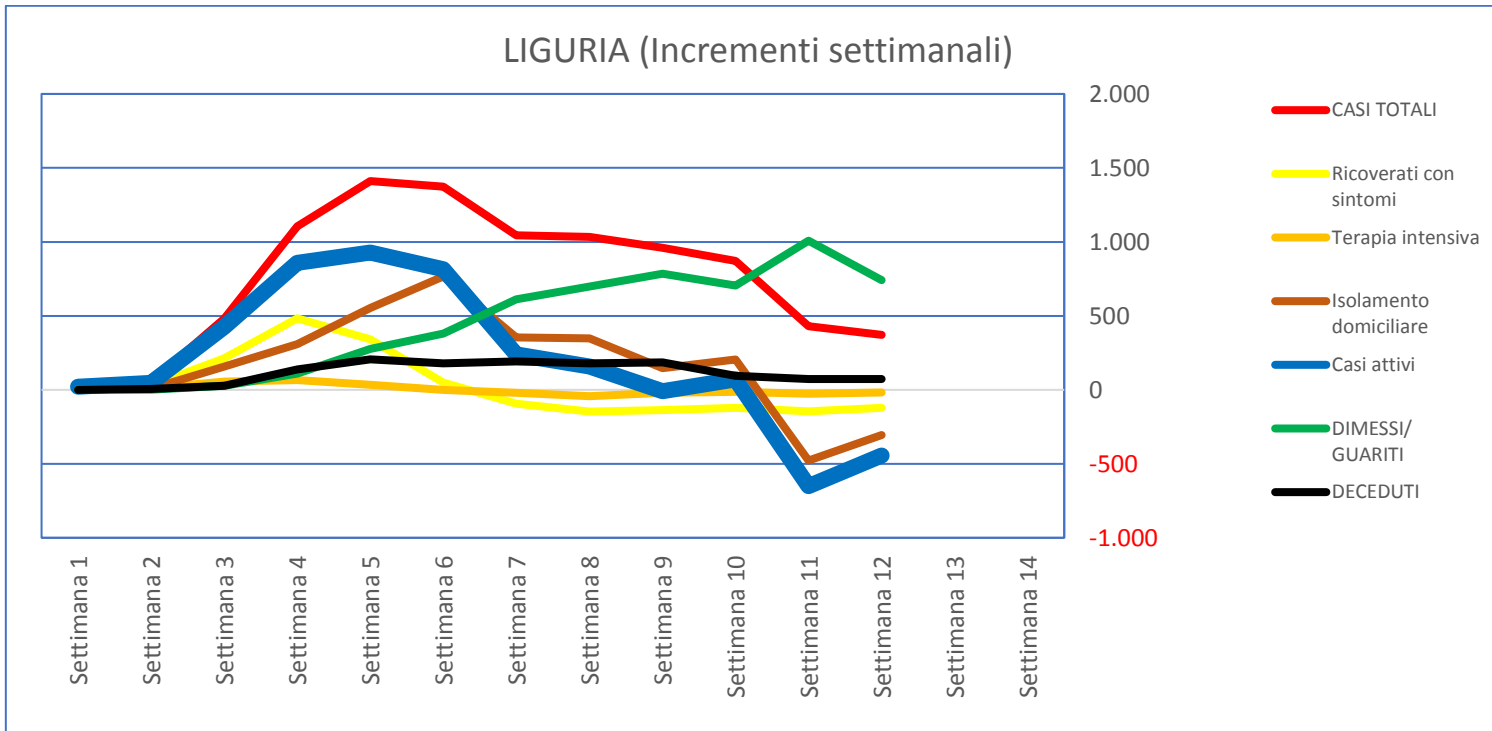
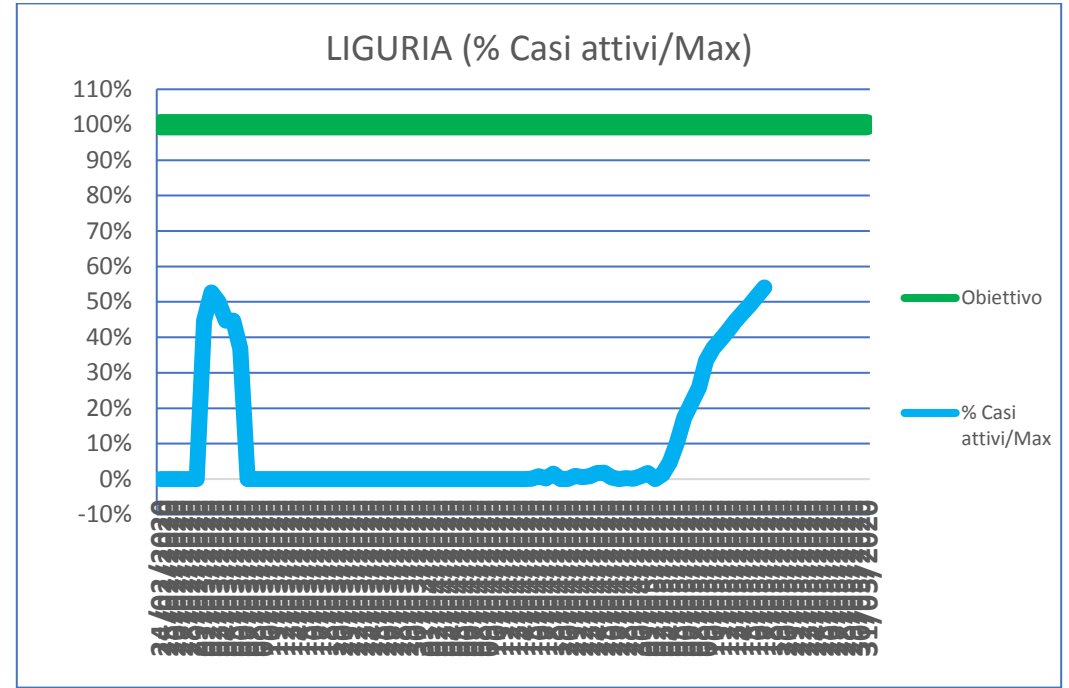
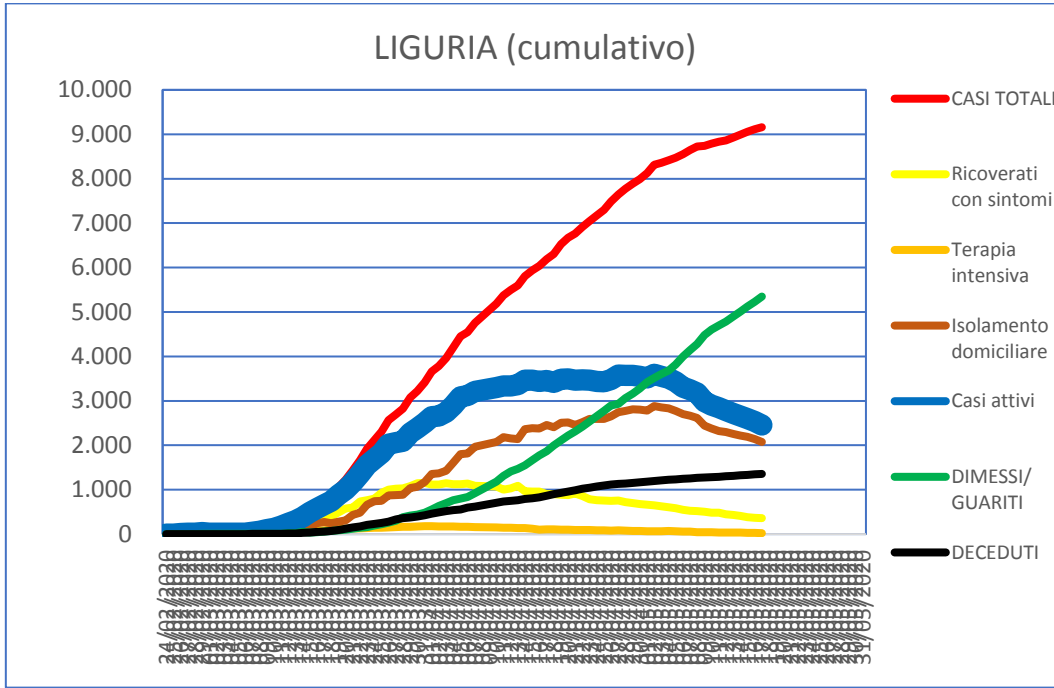
## PIEMONTE (% Casi attivi/Max)



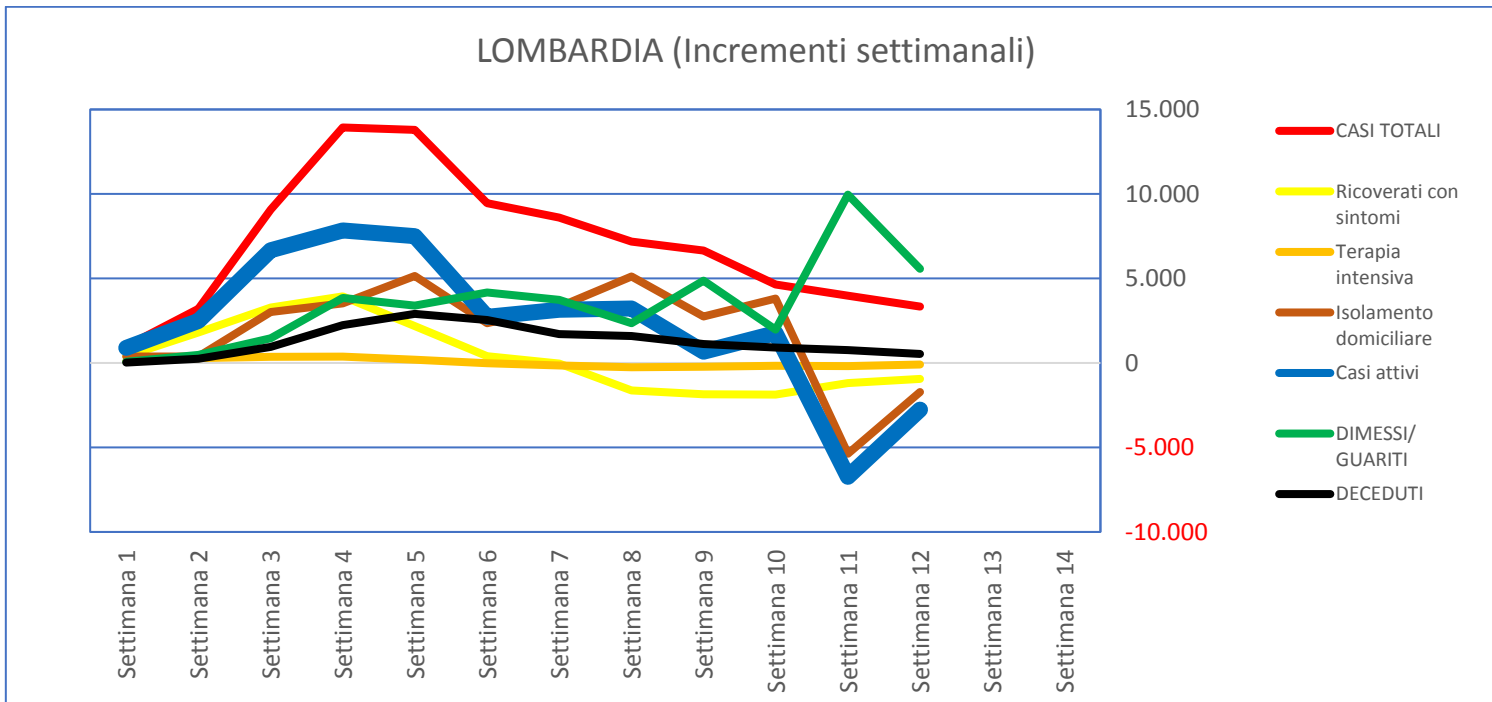
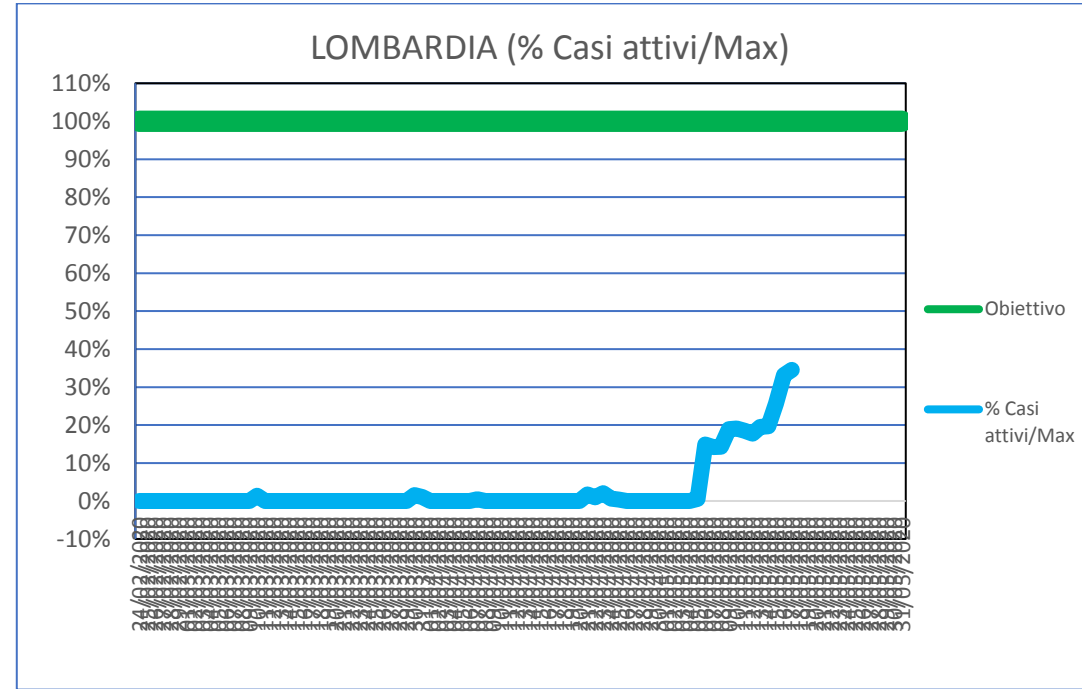
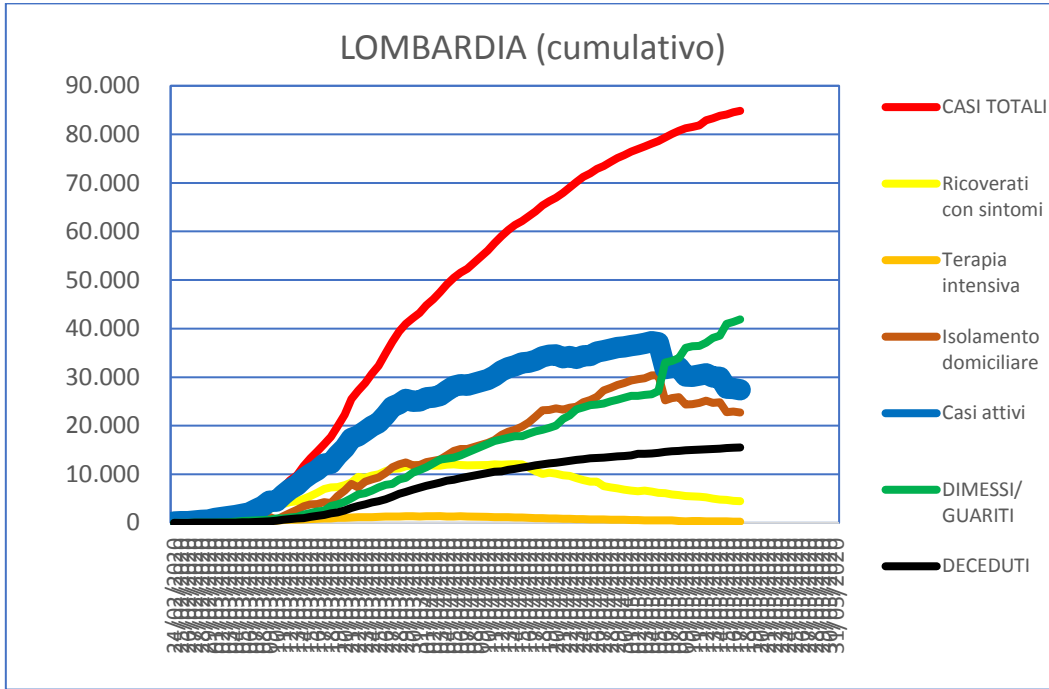
## PIEMONTE (Incrementi settimanali)



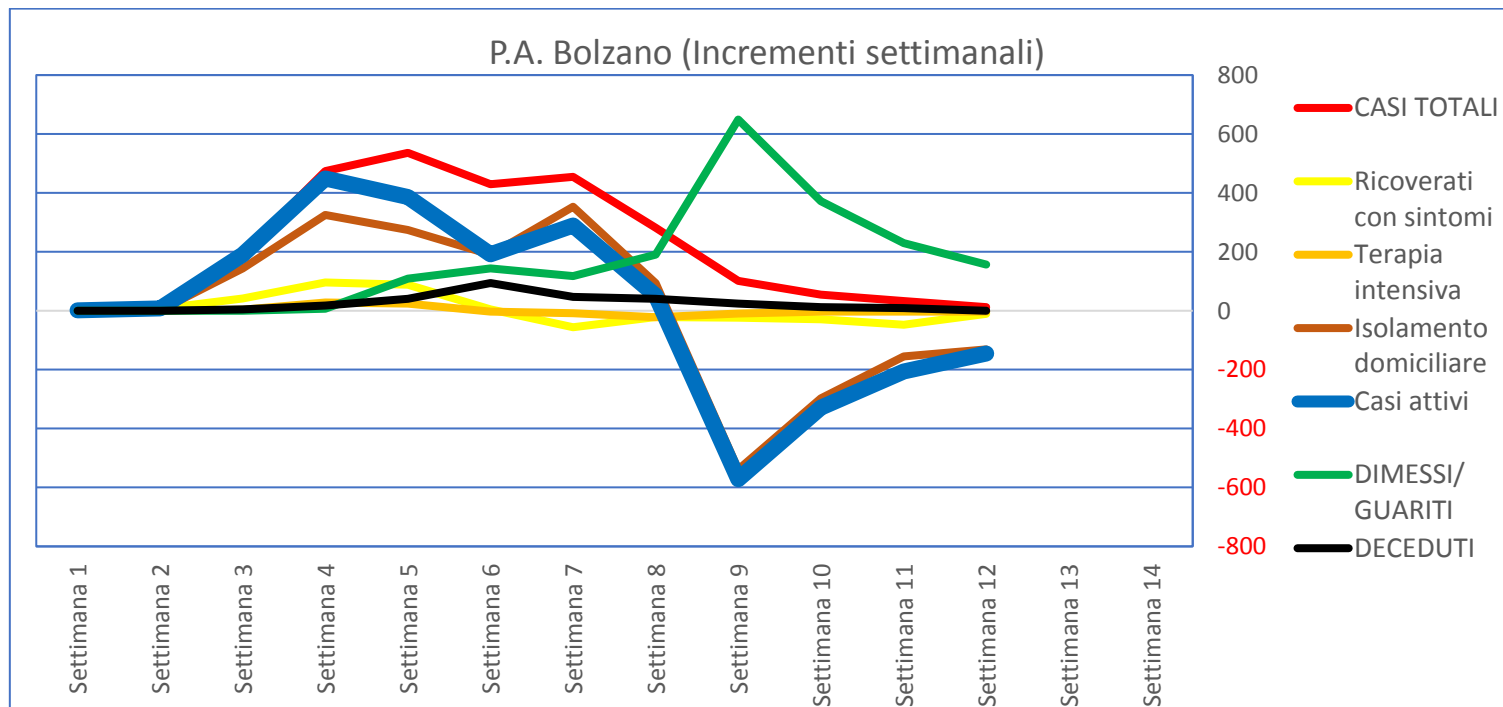
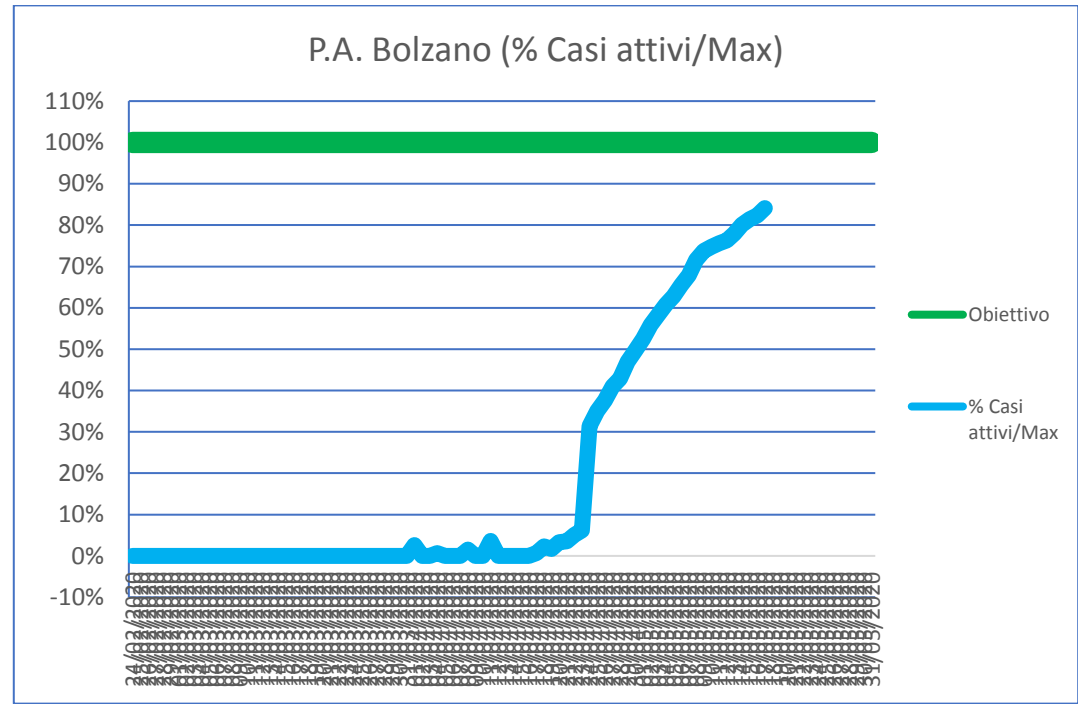
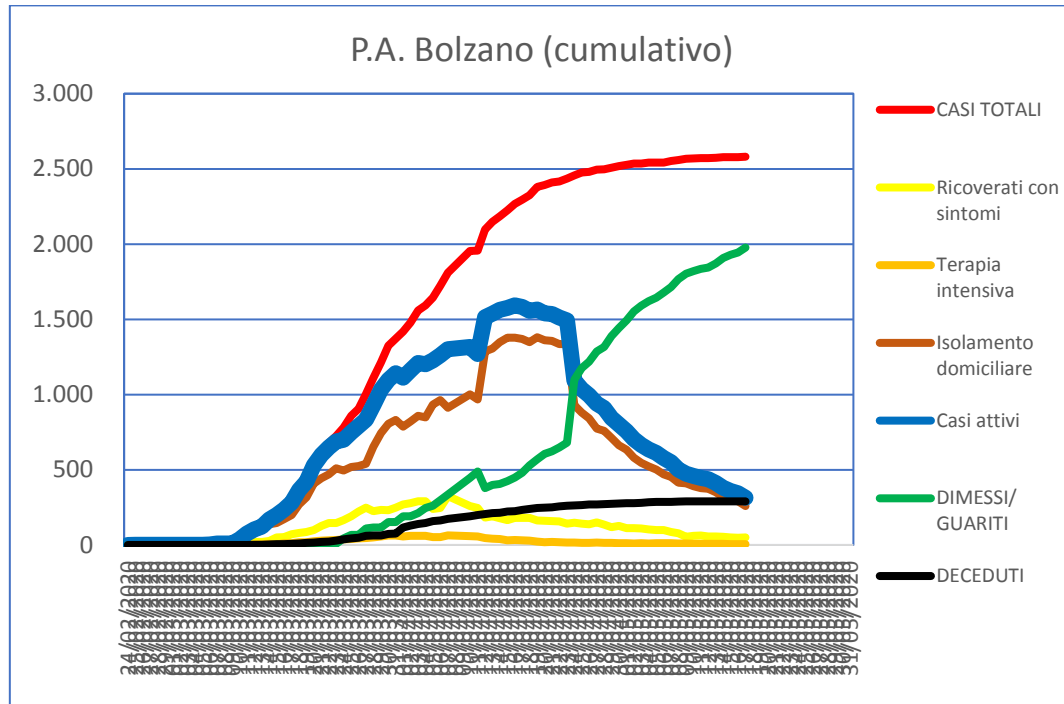
# LIGURIA



# LOMBARDIA

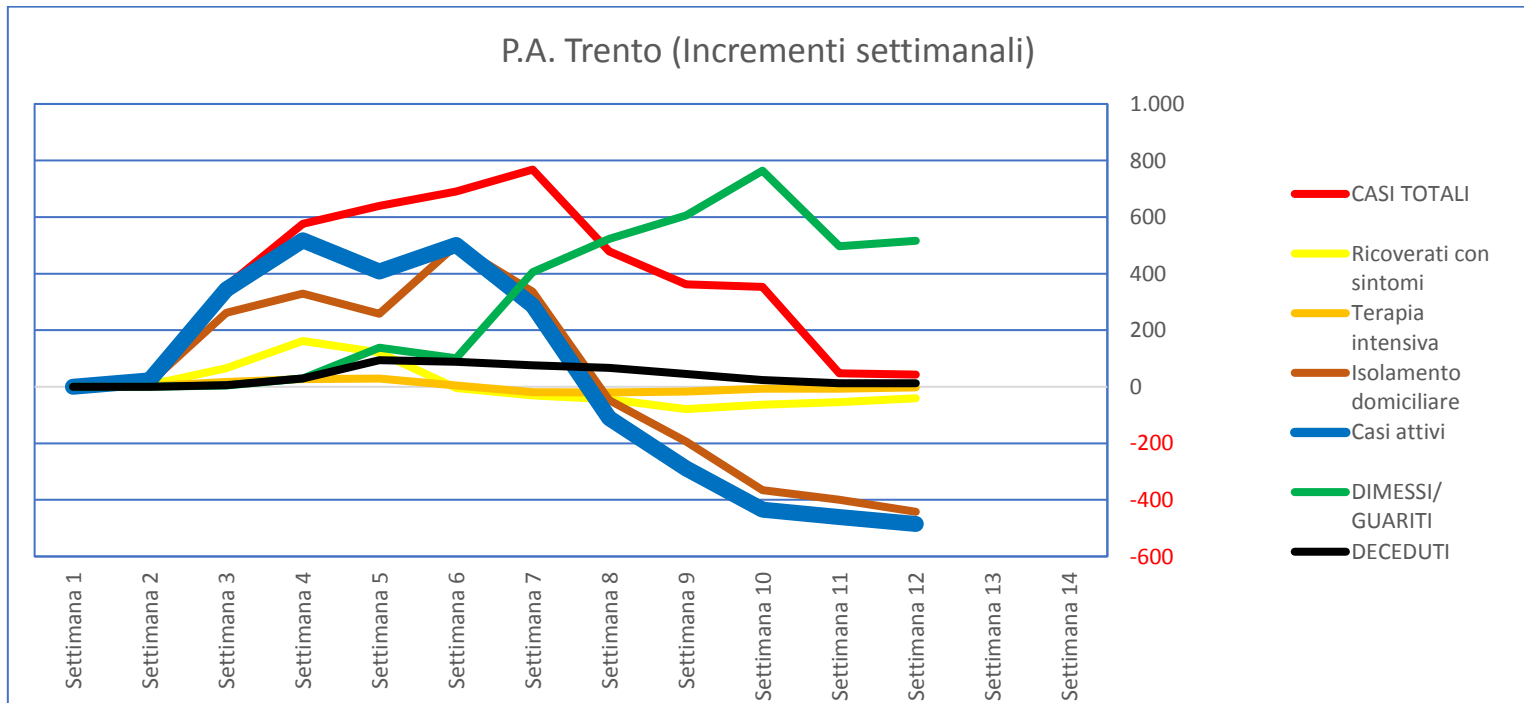
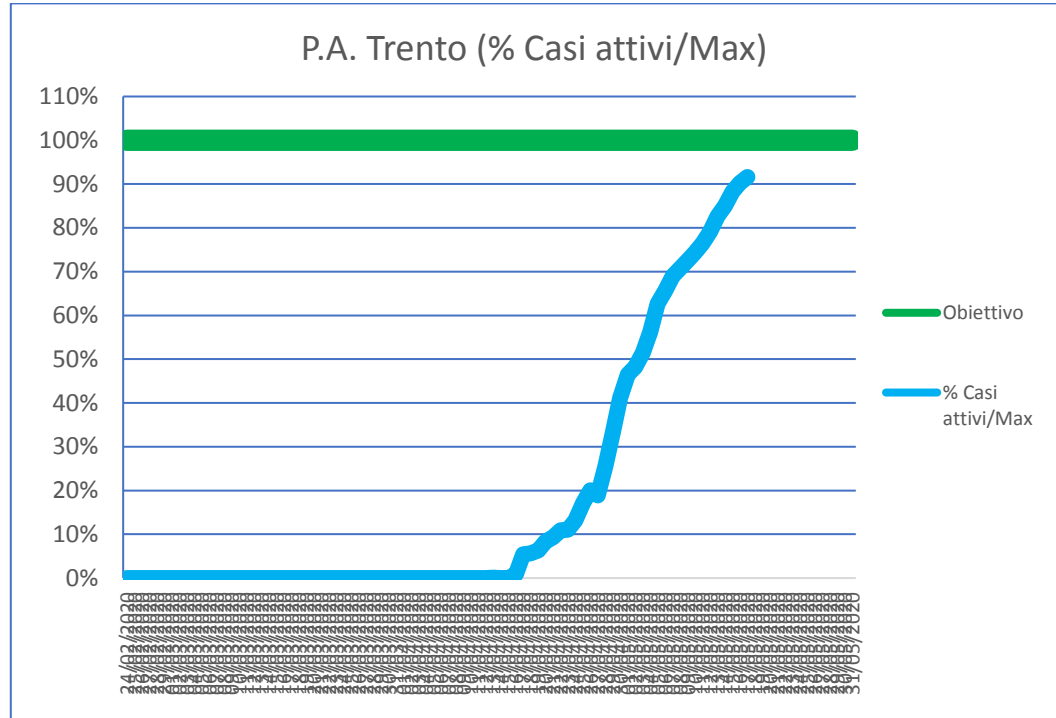
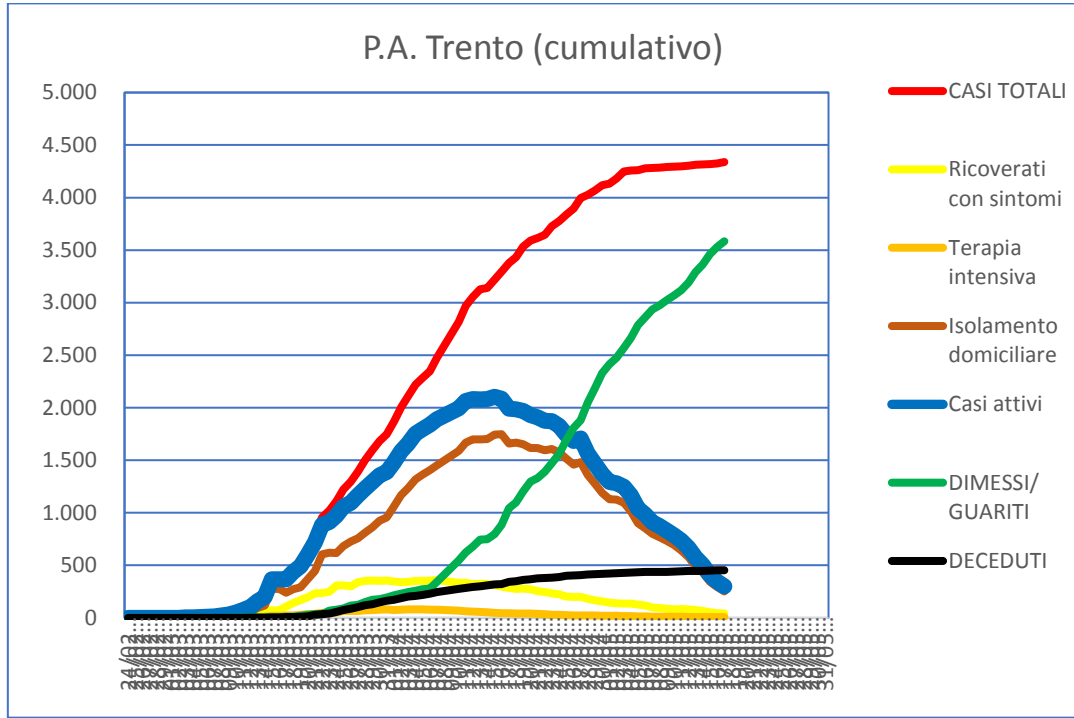


# P.A. BOLZANO



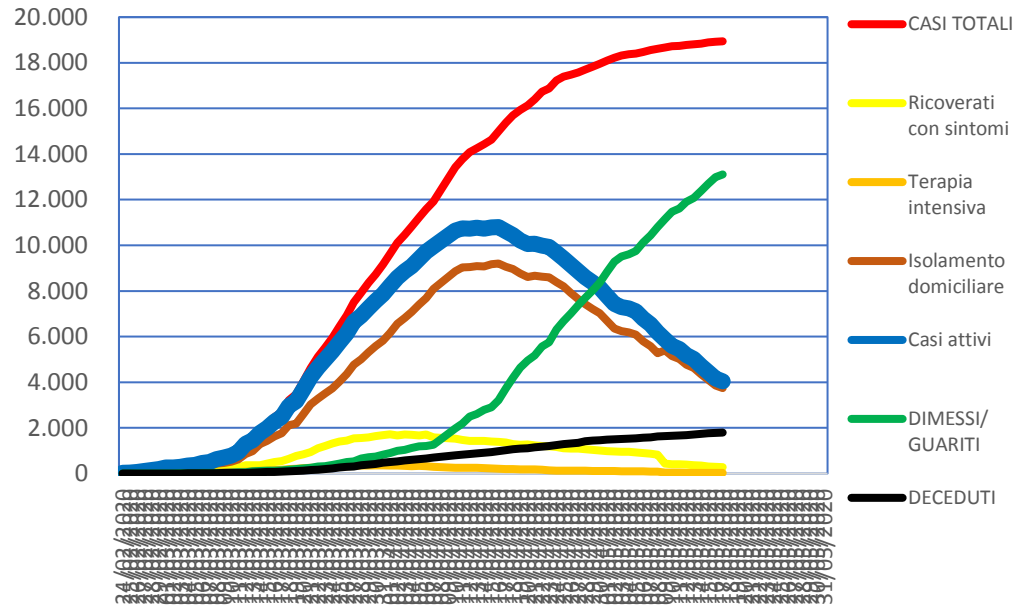


# P.A. TRENTO

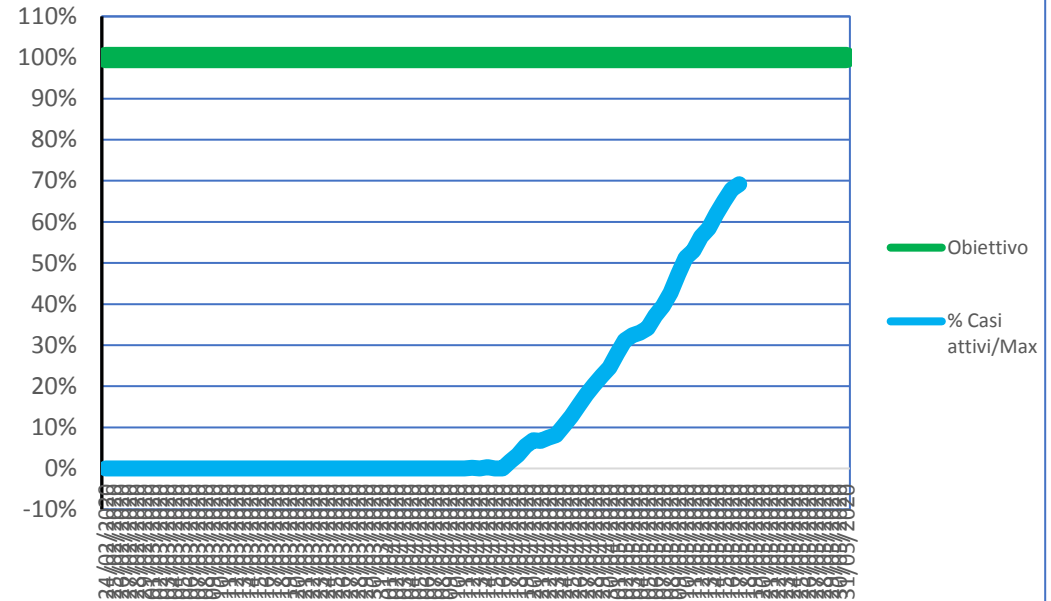


# VENETO

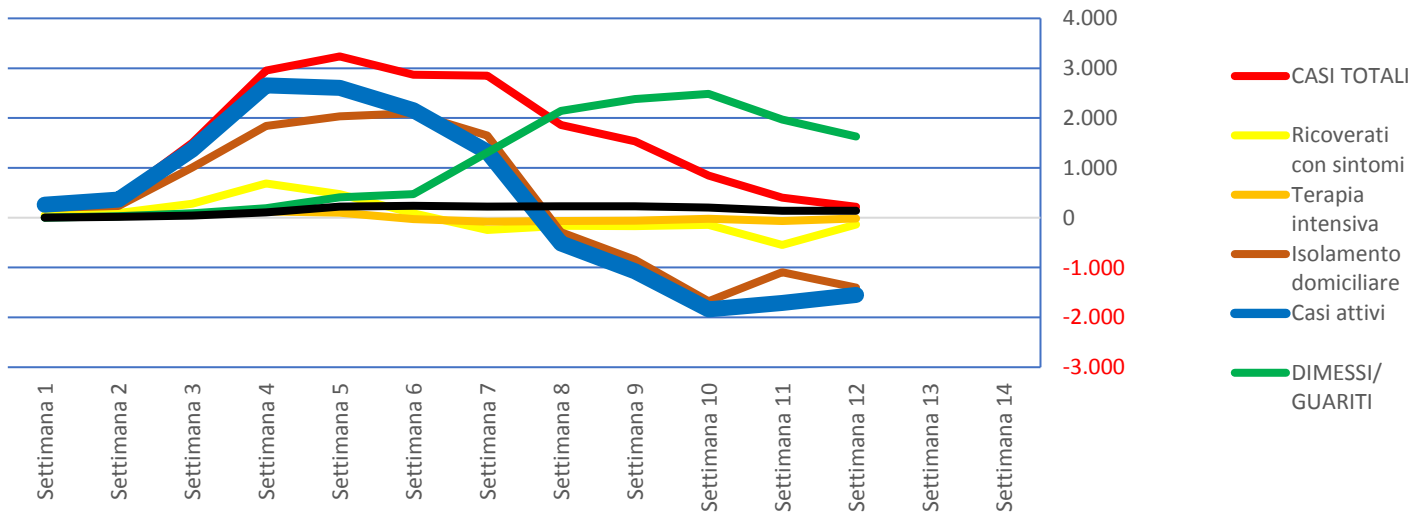
## VENETO (cumulativo)



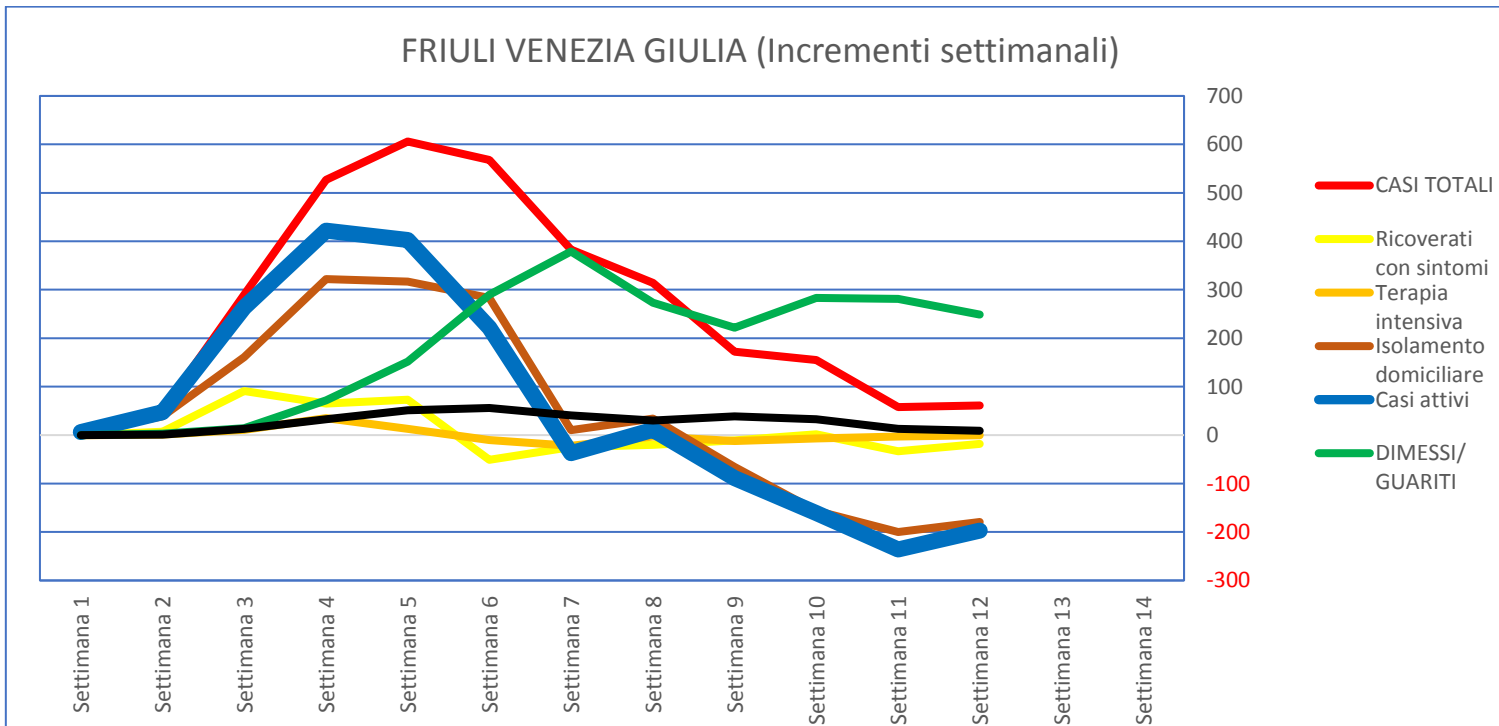
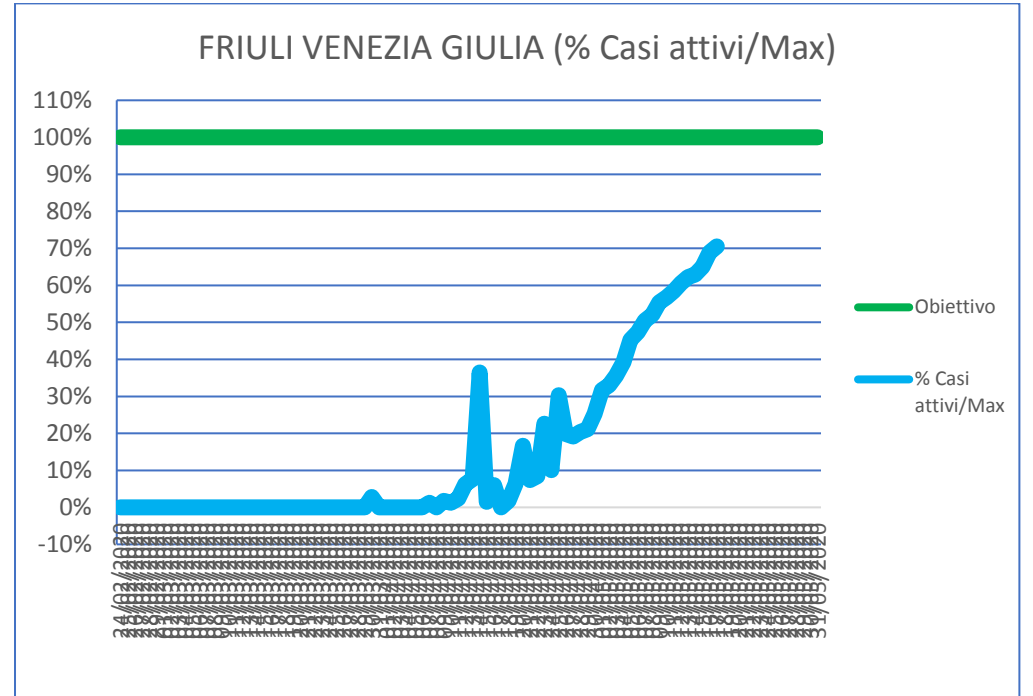
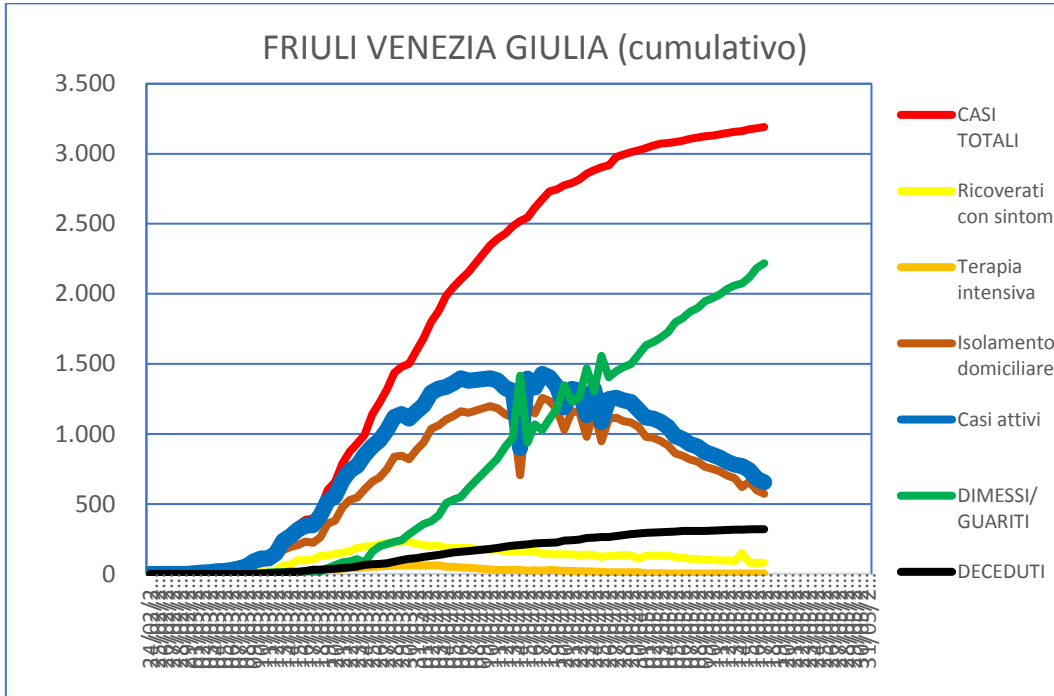
## VENETO ((% Casi attivi/Max))



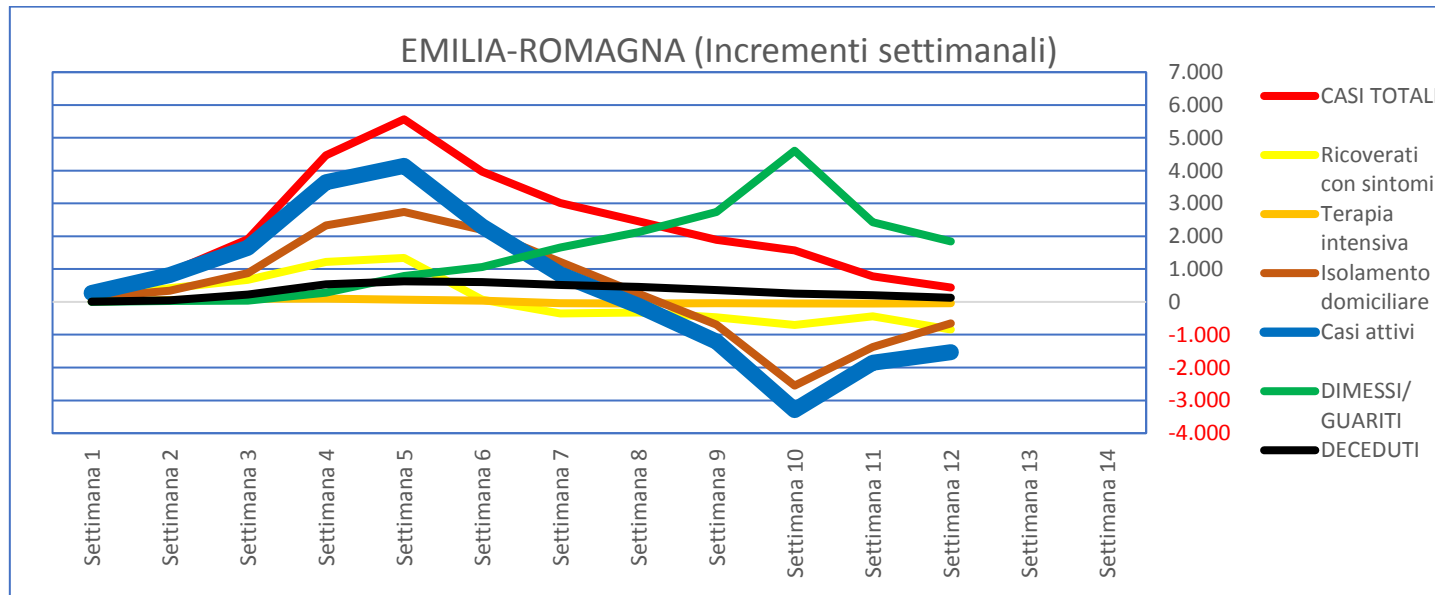
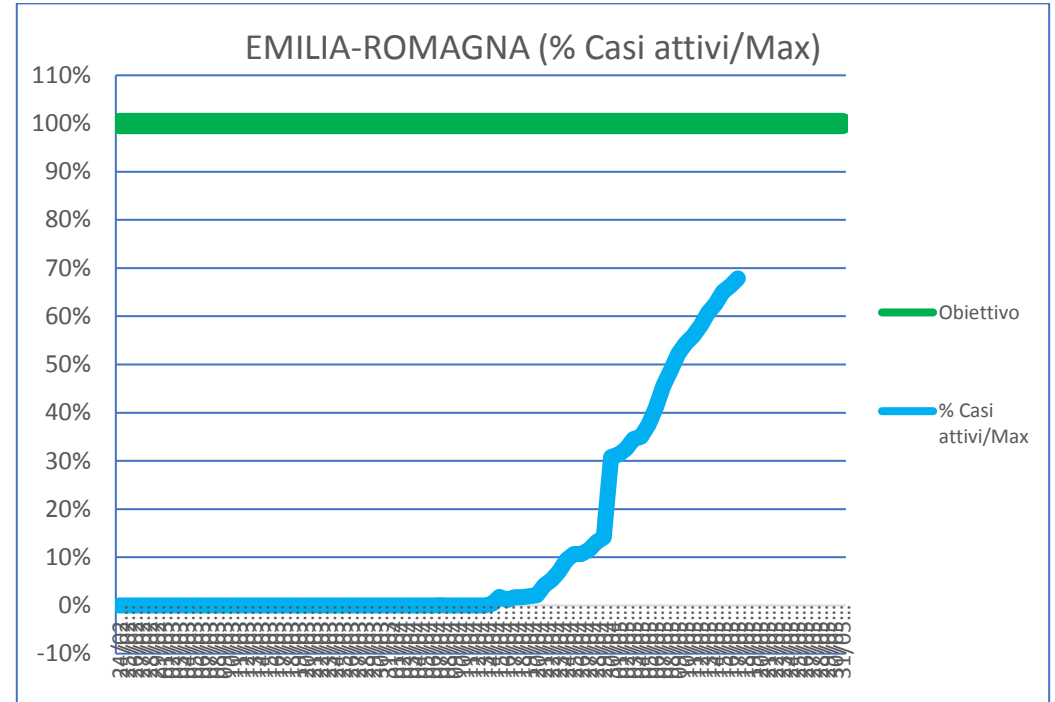
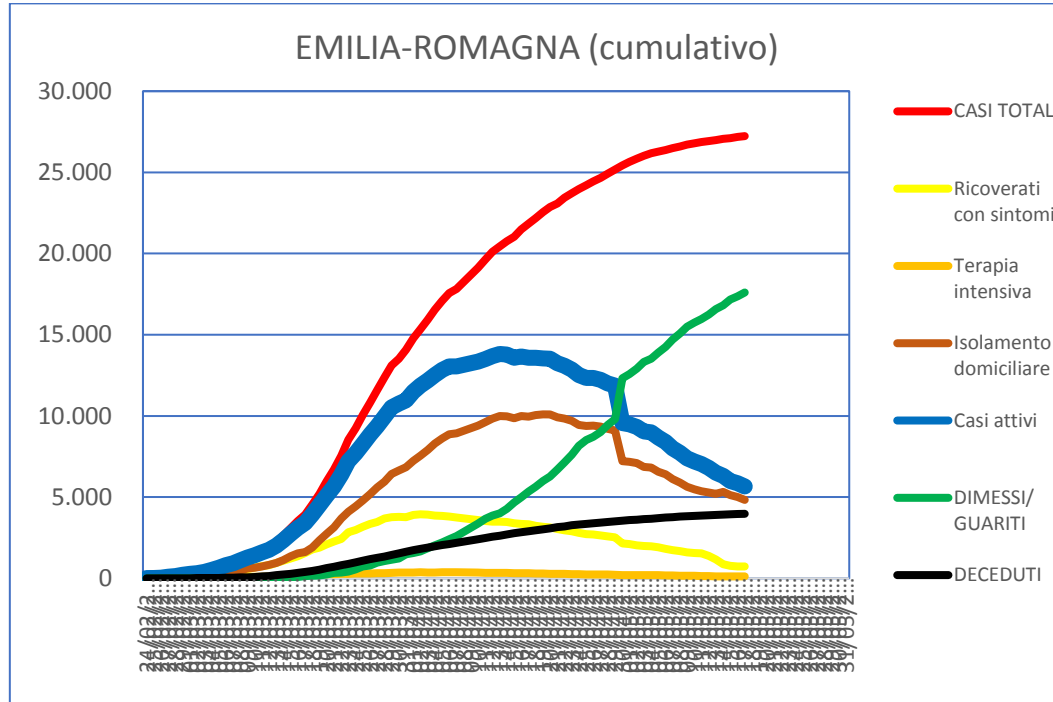
## VENETO (Incrementi settimanali)



# FRIULI VENEZIA GIULIA

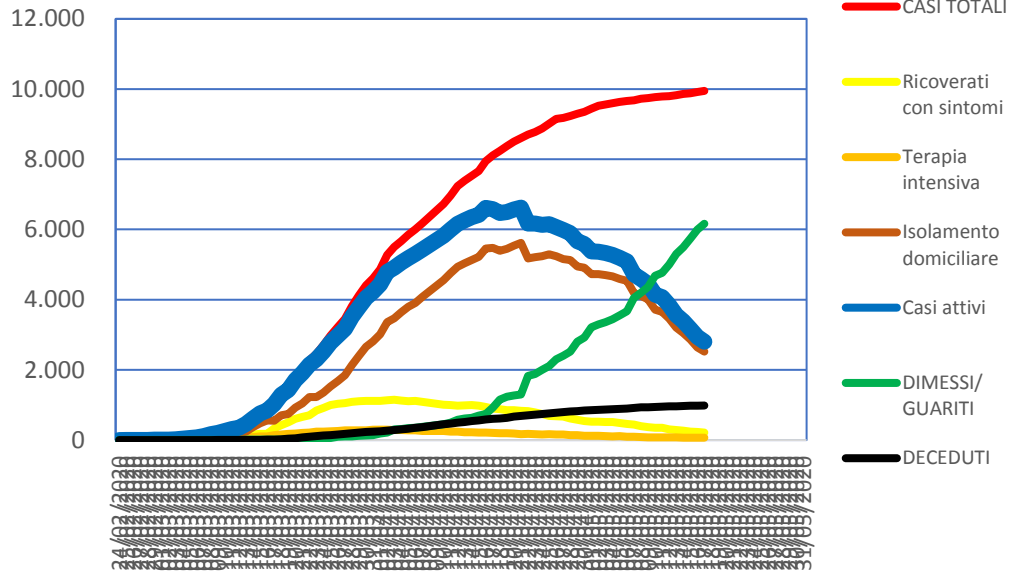


# EMILIA ROMAGNA

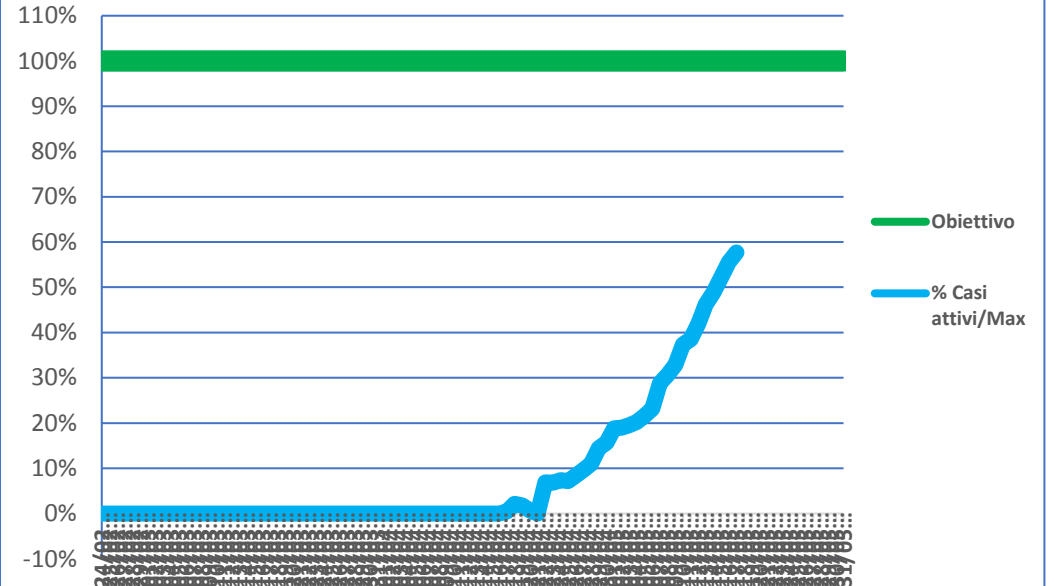


# TOSCANA

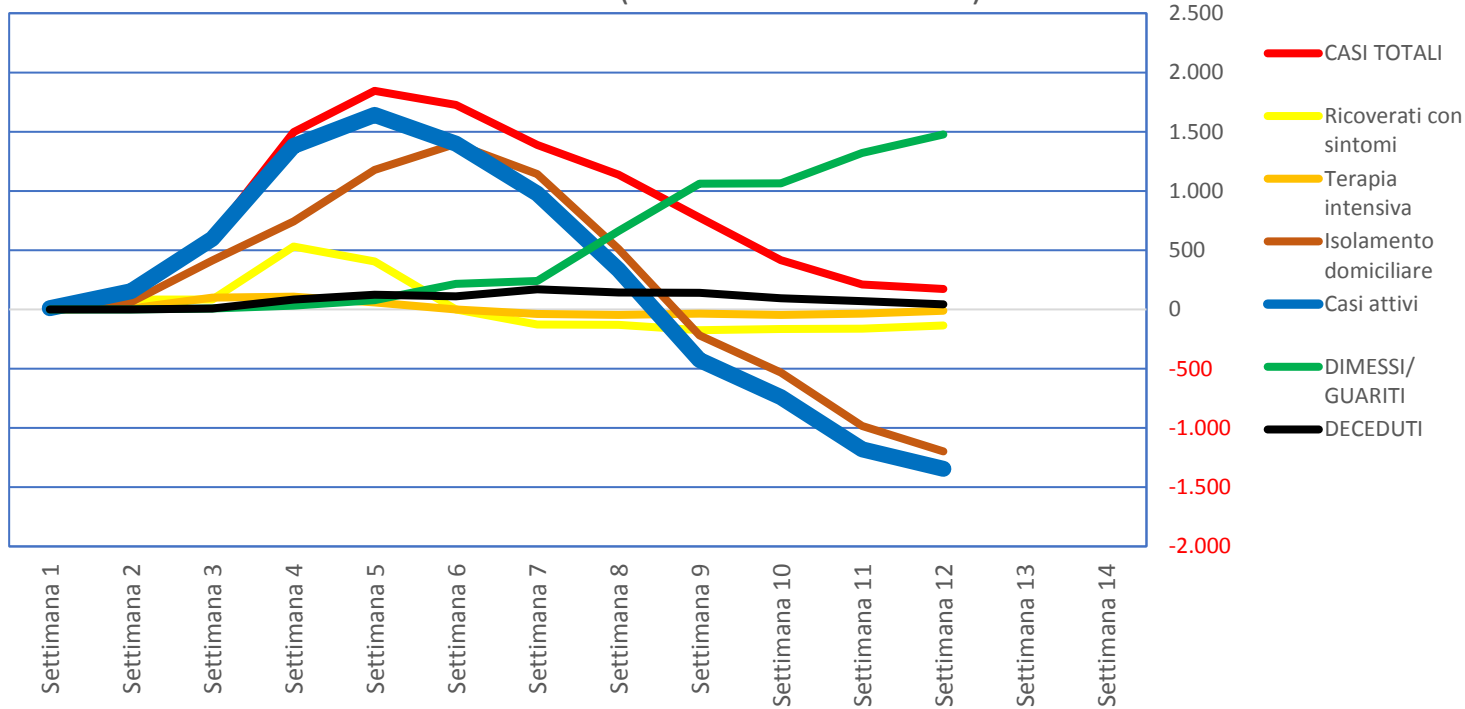
## TOSCANA (cumulativo)



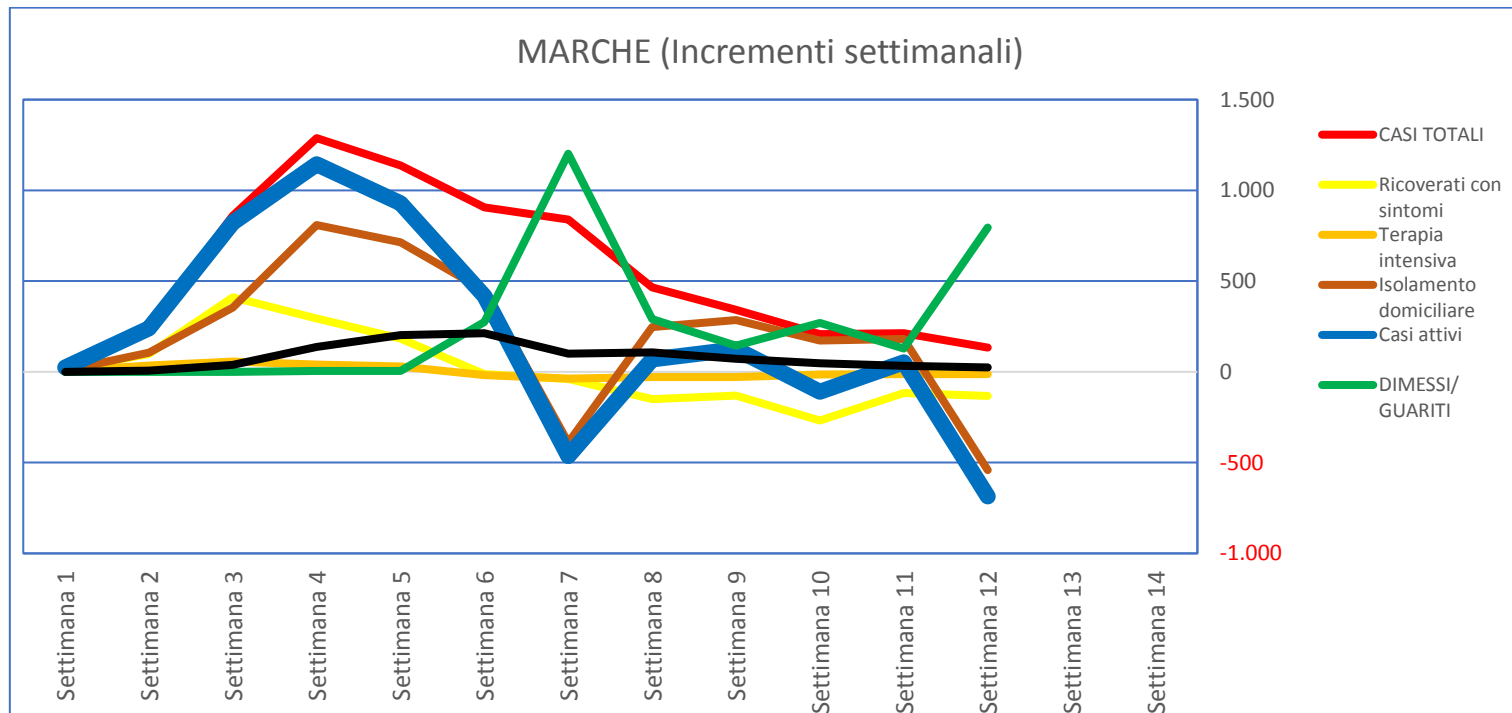
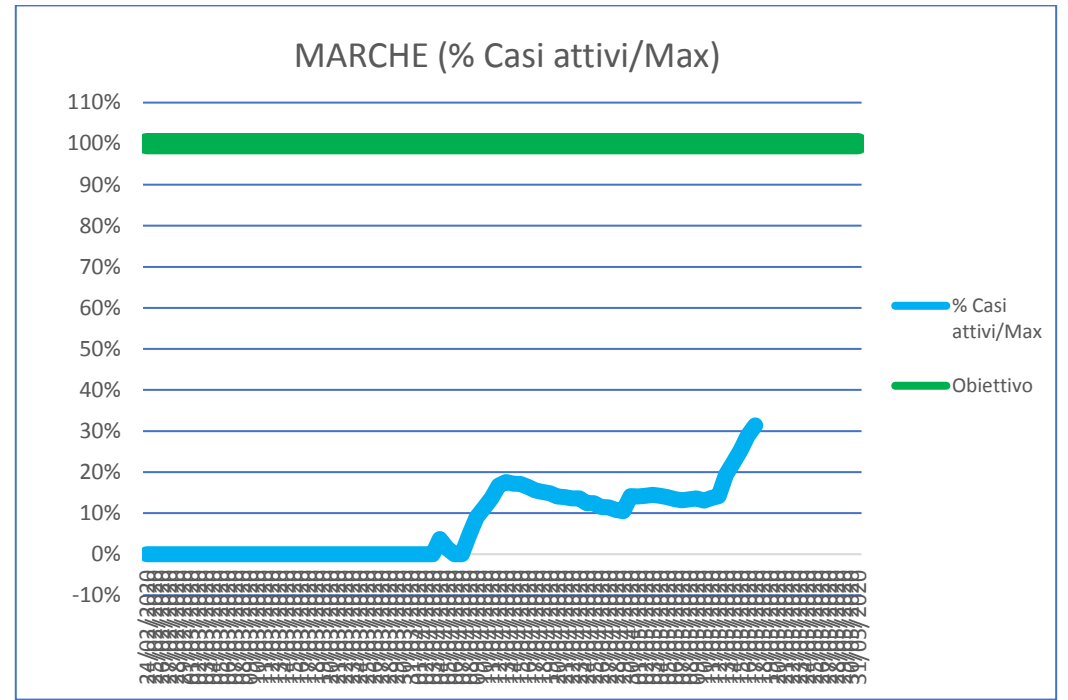
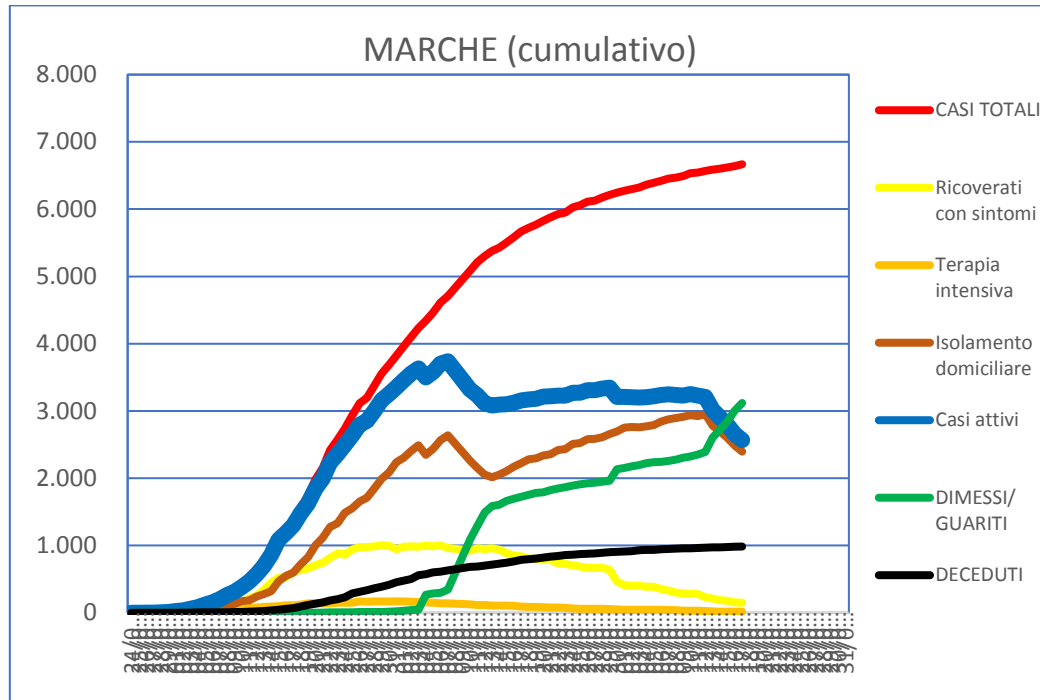
## TOSCANA (% Casi attivi/Max)



## TOSCANA (Incrementi settimanali)

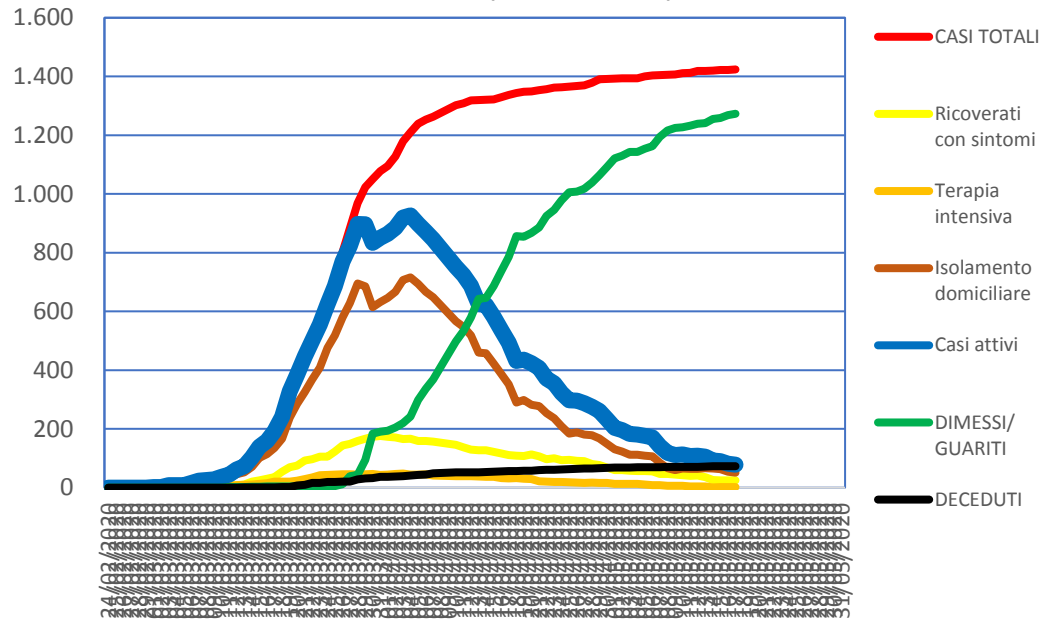


# MARCHE

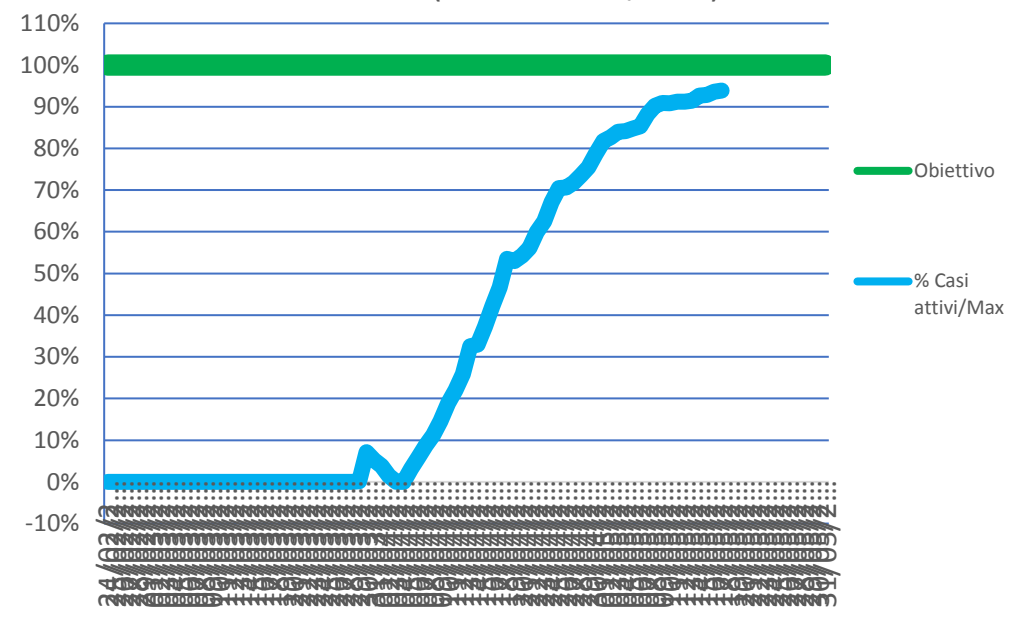


# UMBRIA

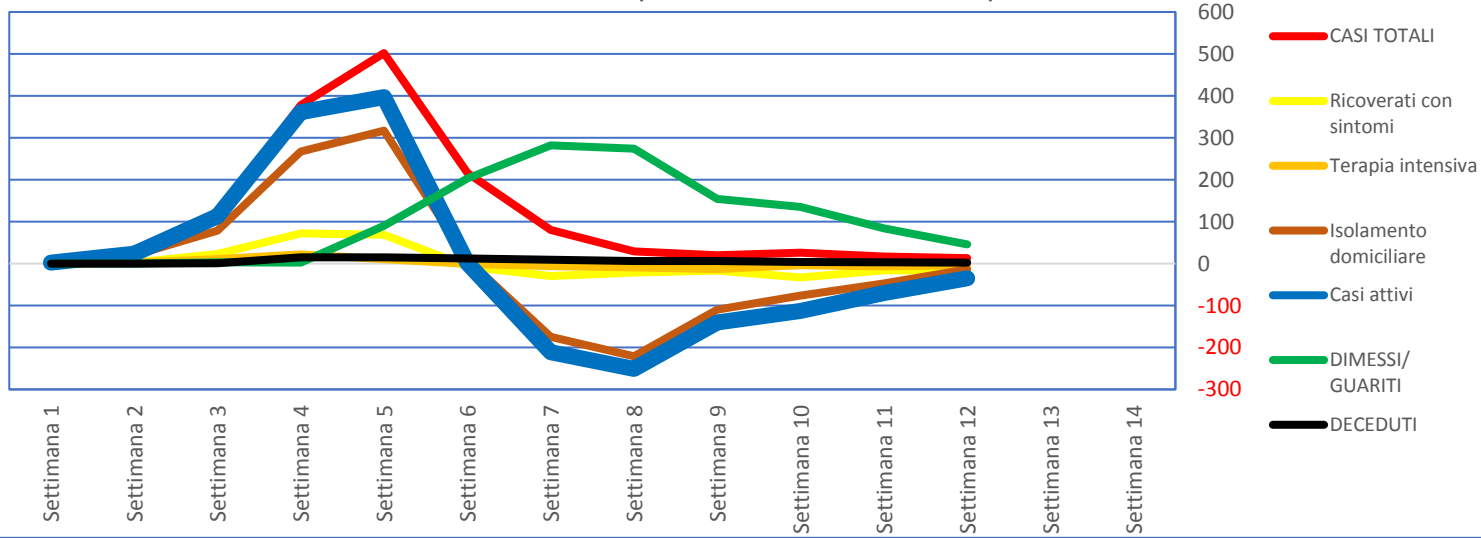
## UMBRIA (cumulativo)



## UMBRIA (% Casi attivi/Max)

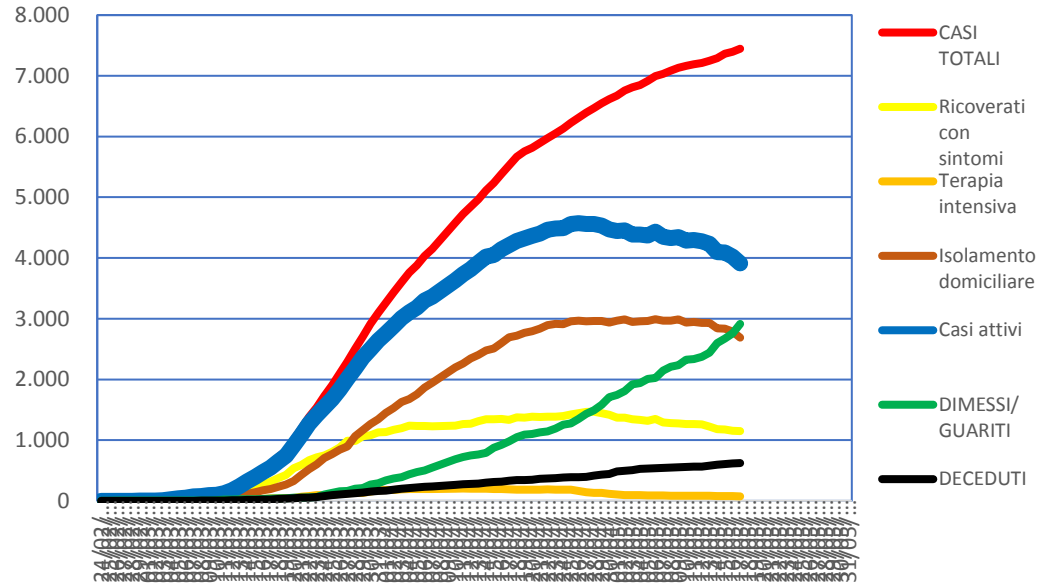


## UMBRIA (Incrementi settimanali)

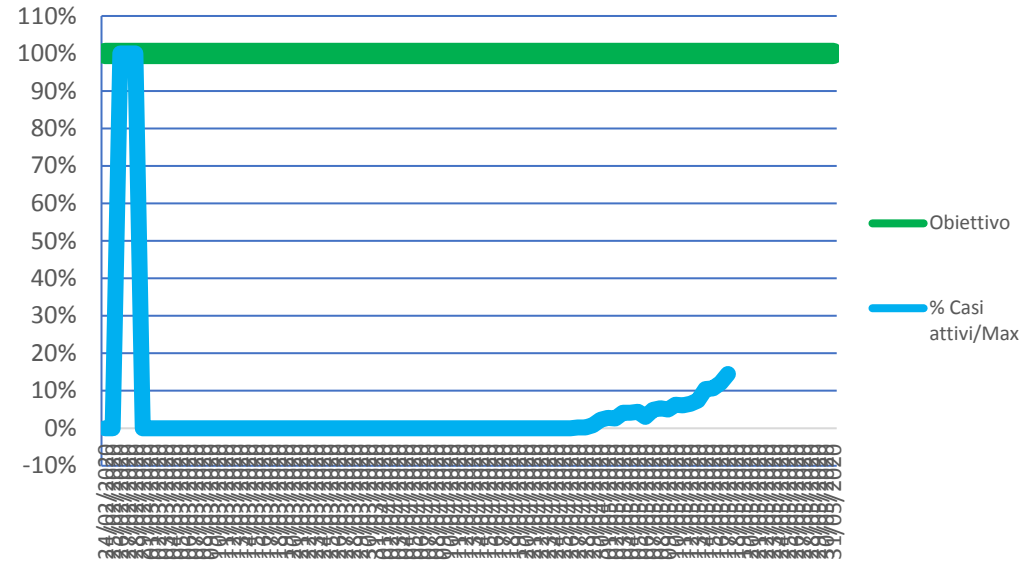


# LAZIO

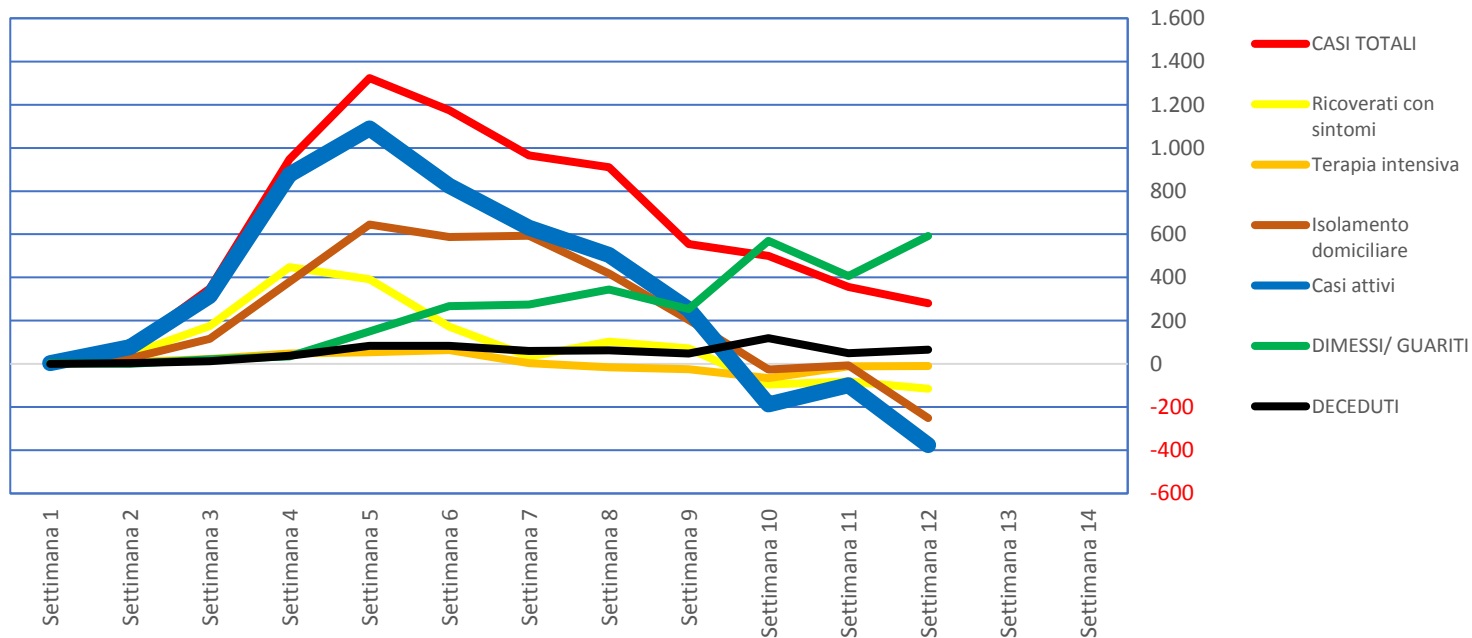
## LAZIO (cumulativo)



## LAZIO (% Casi attivi/Max)

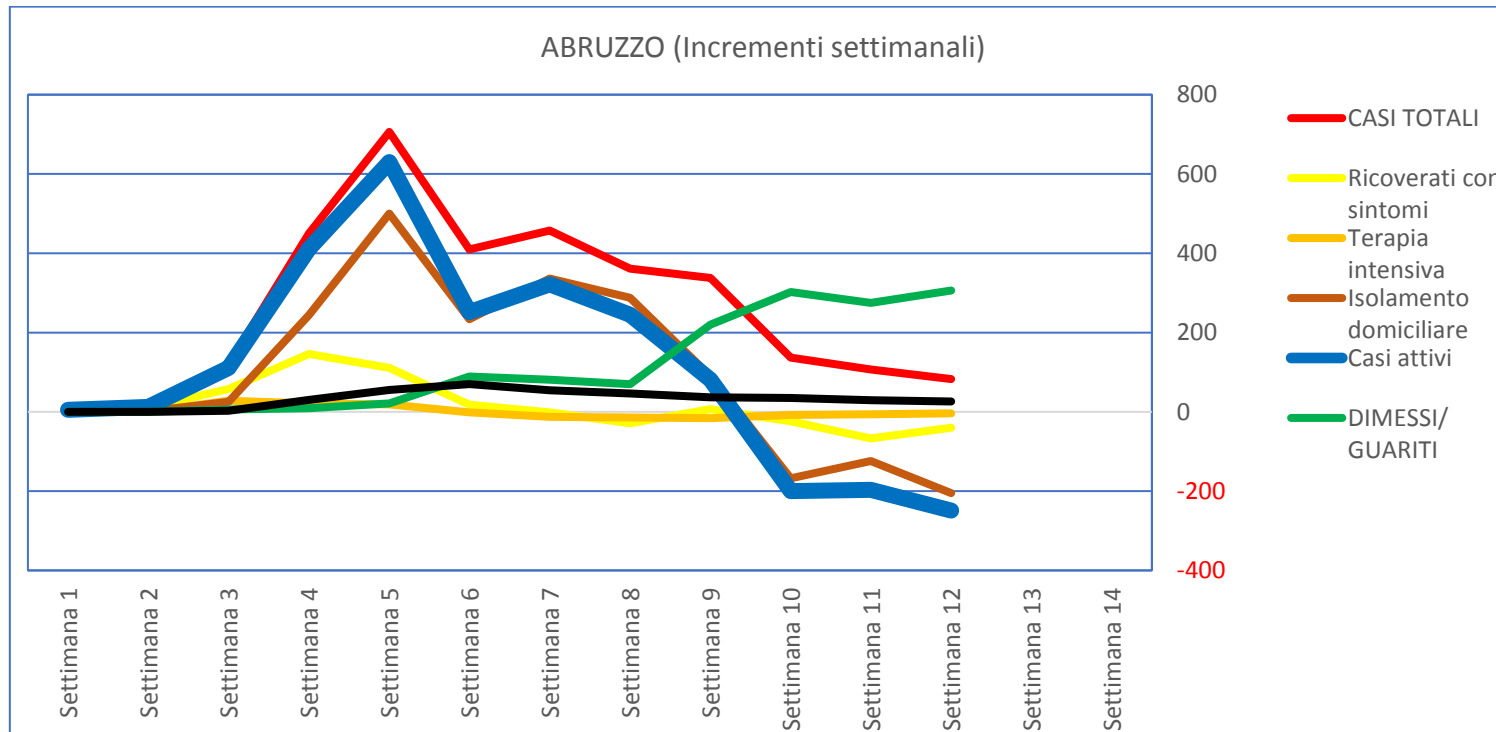
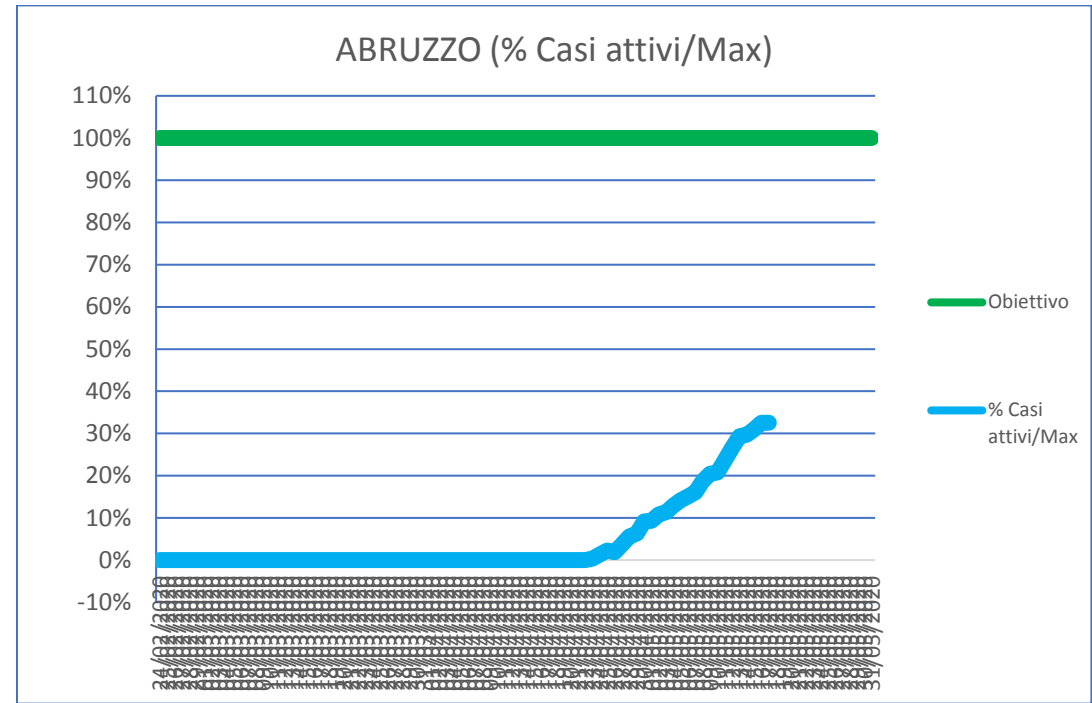
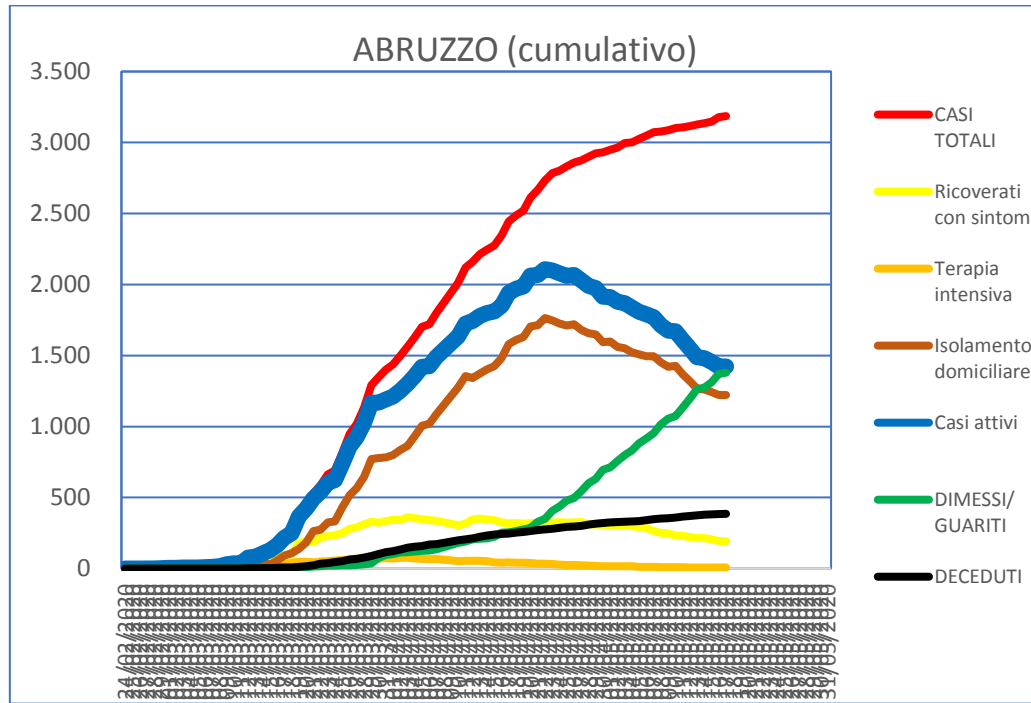


## LAZIO (Incrementi settimanali)

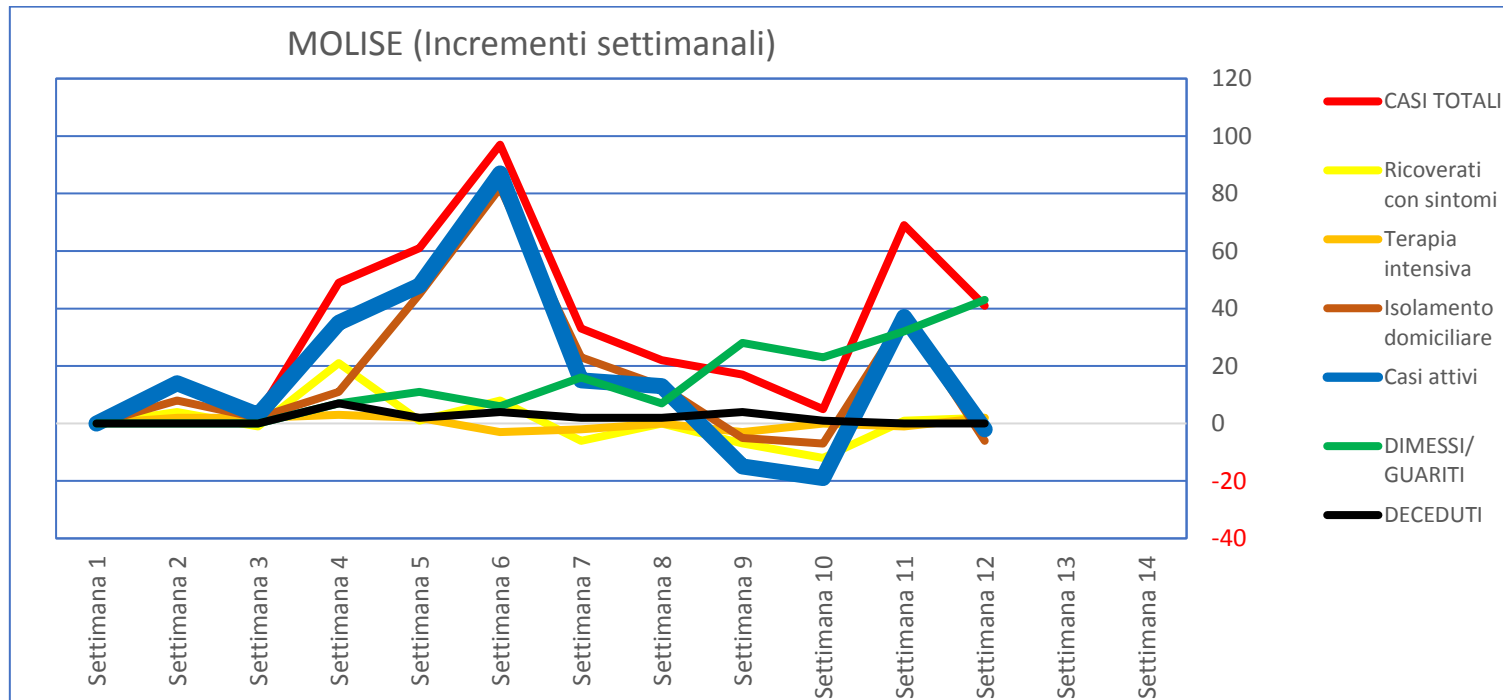
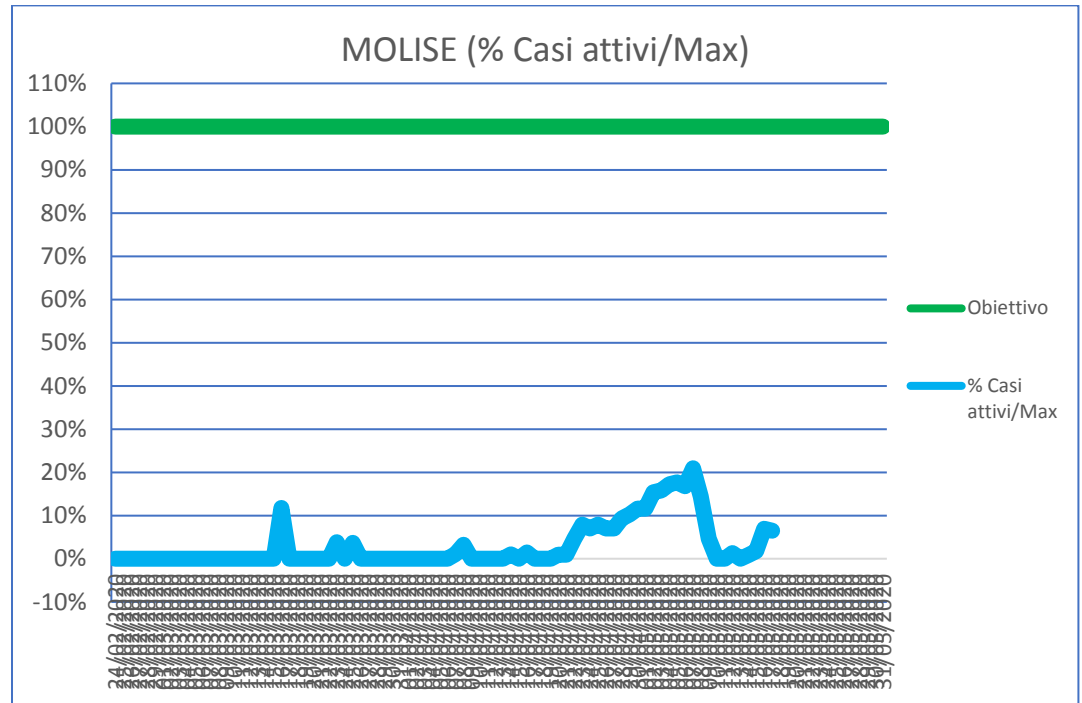
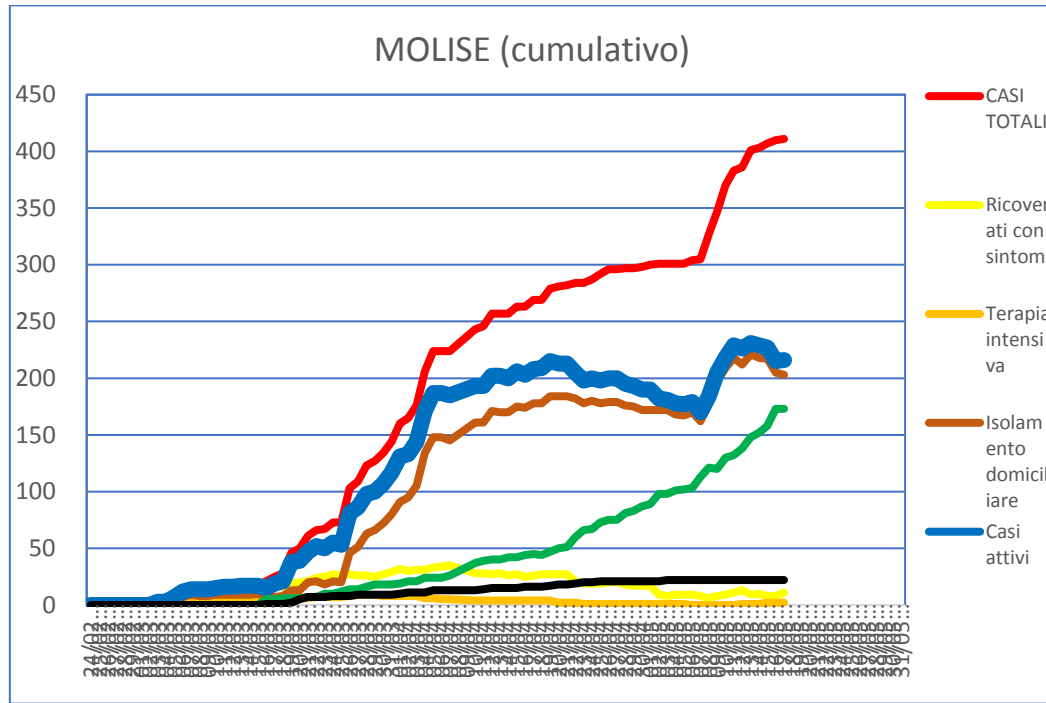




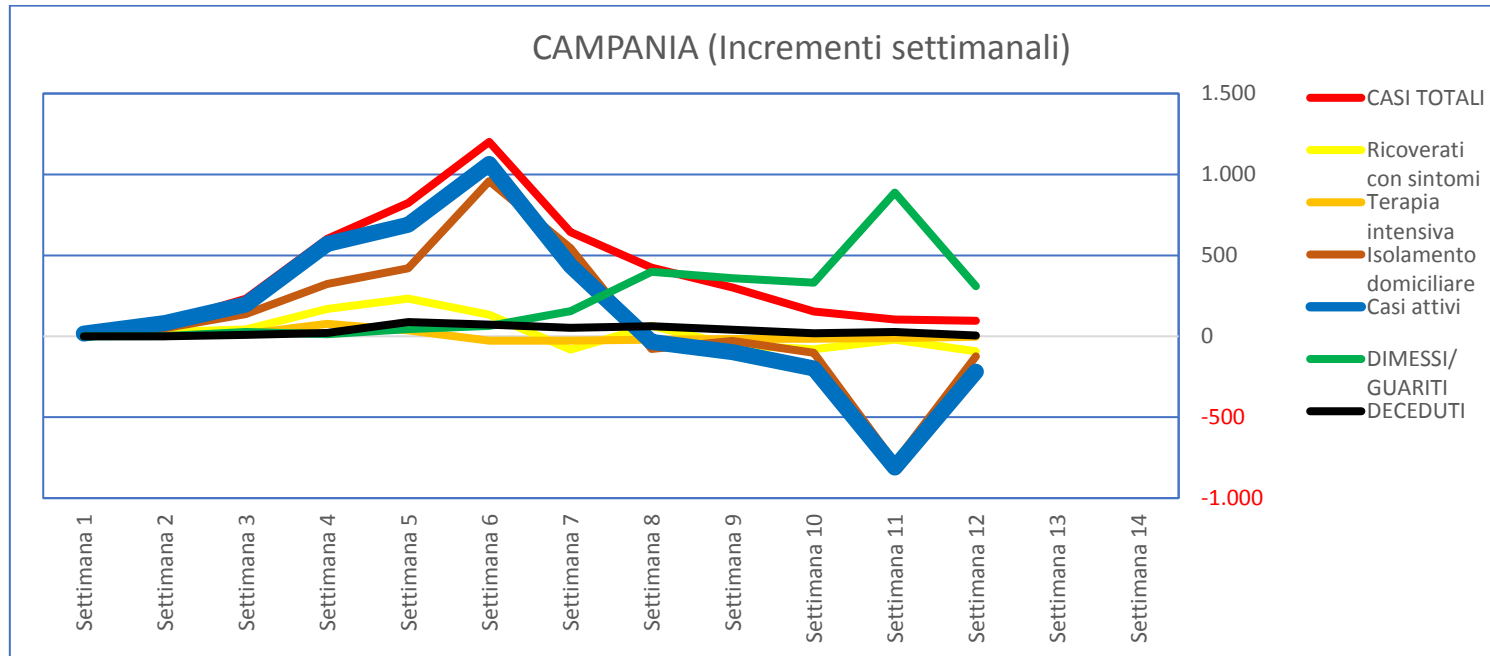
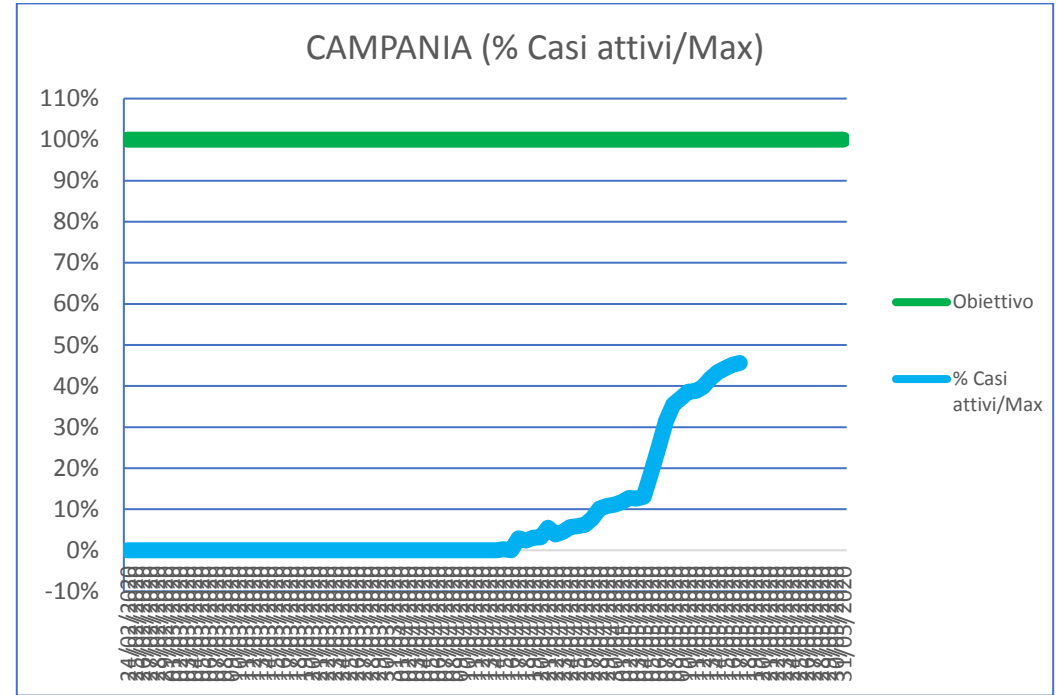
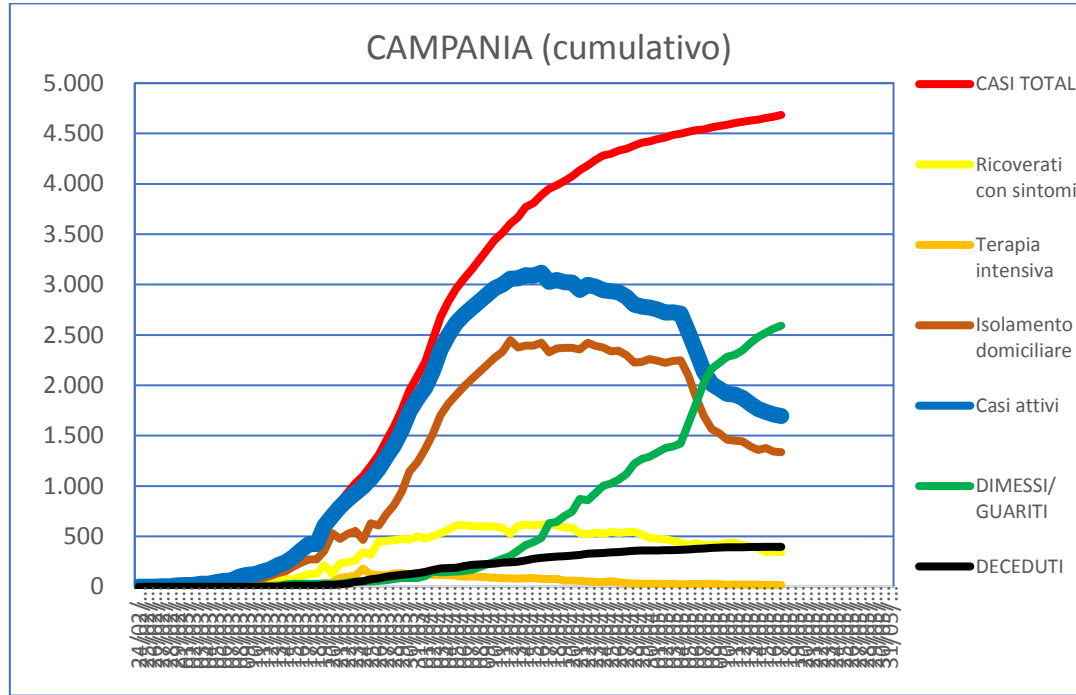
# ABRUZZO



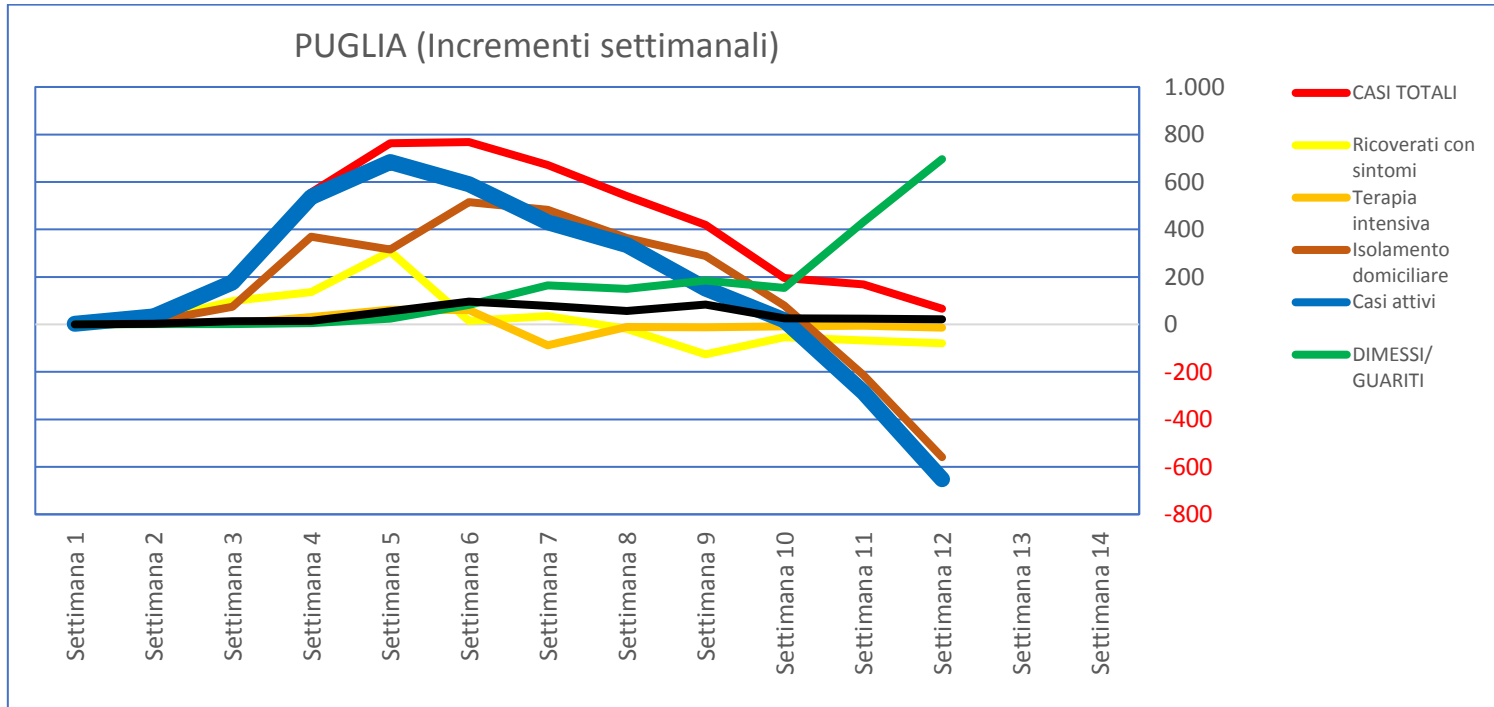
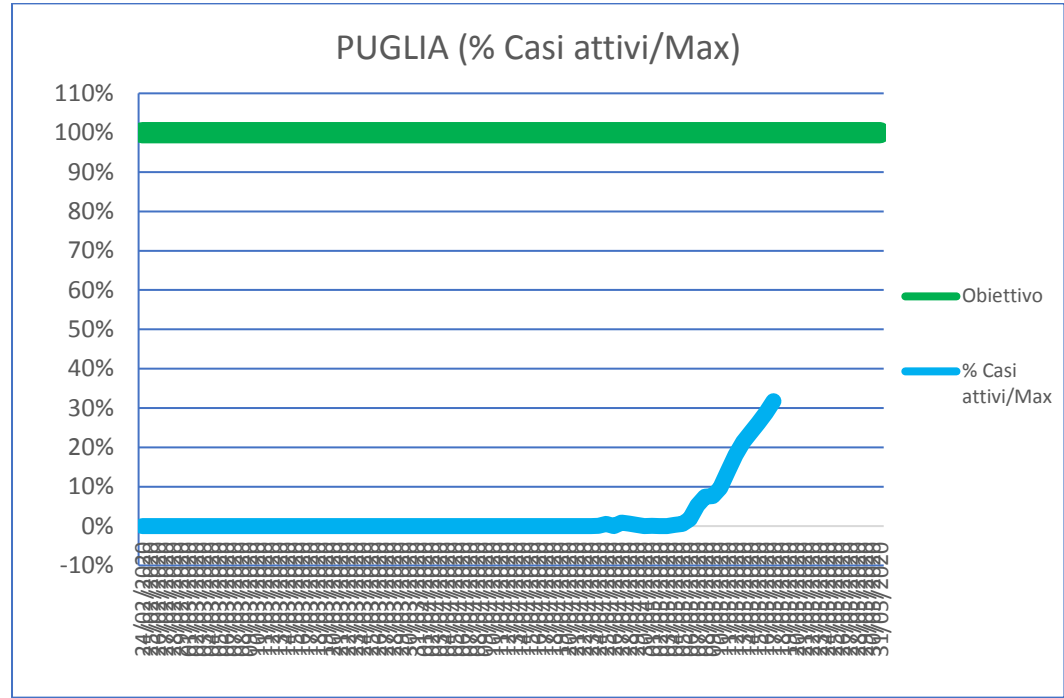
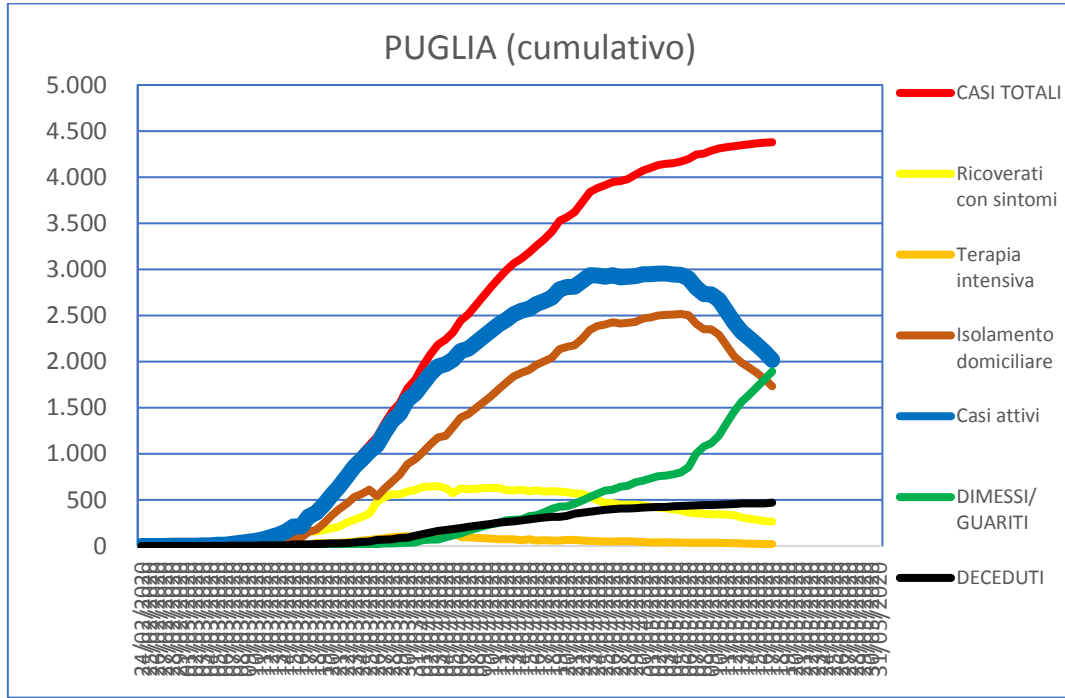
# MOLISE



# CAMPANIA

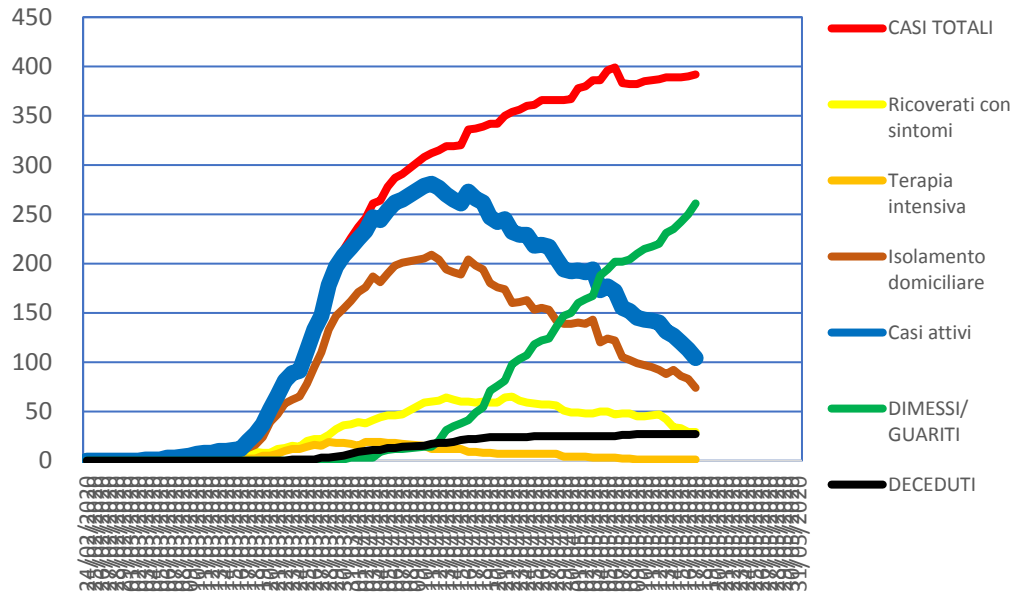


# PUGLIA

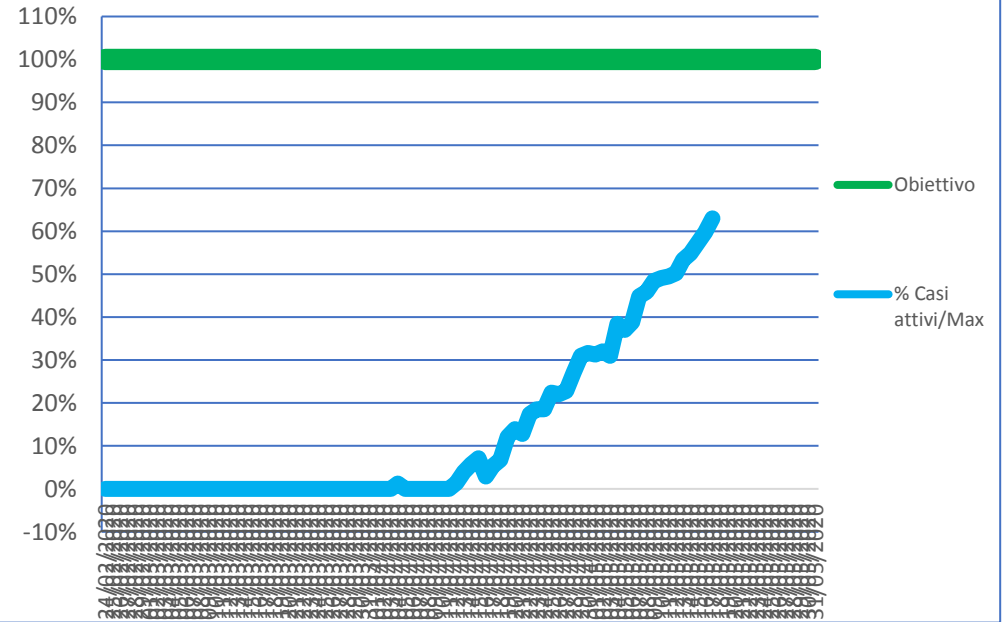


# BASILICATA

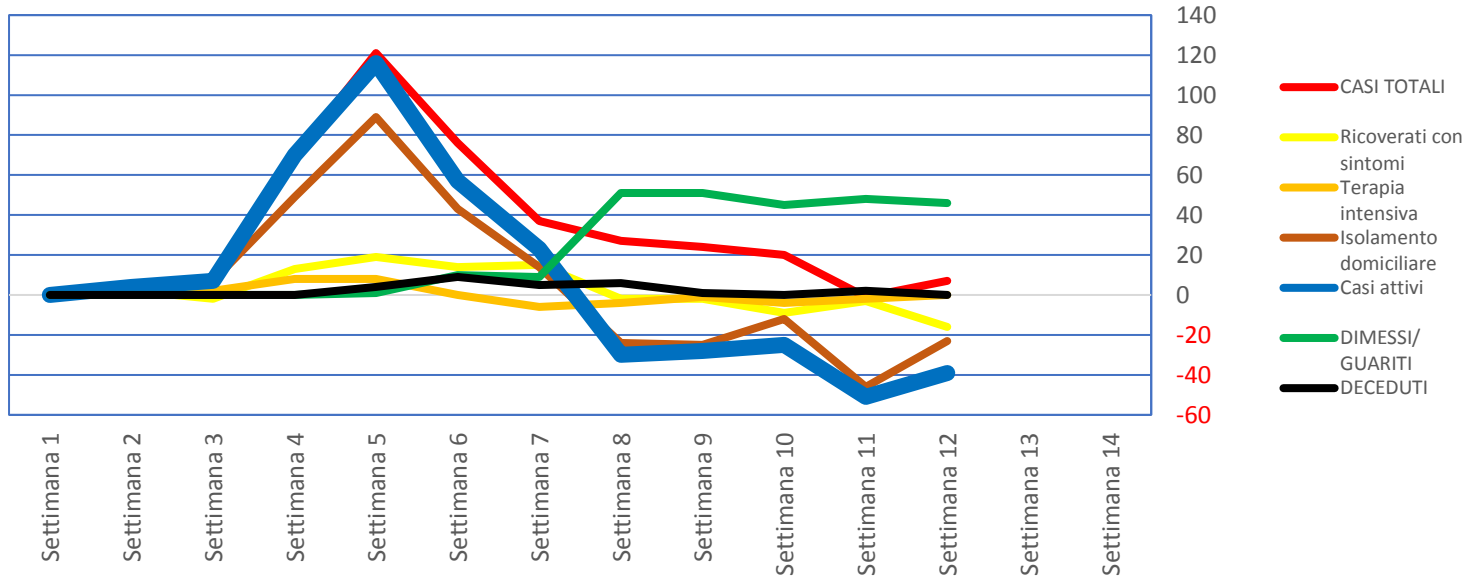
## BASILICATA (cumulativo)



## BASILICATA (% Casi attivi/Max)

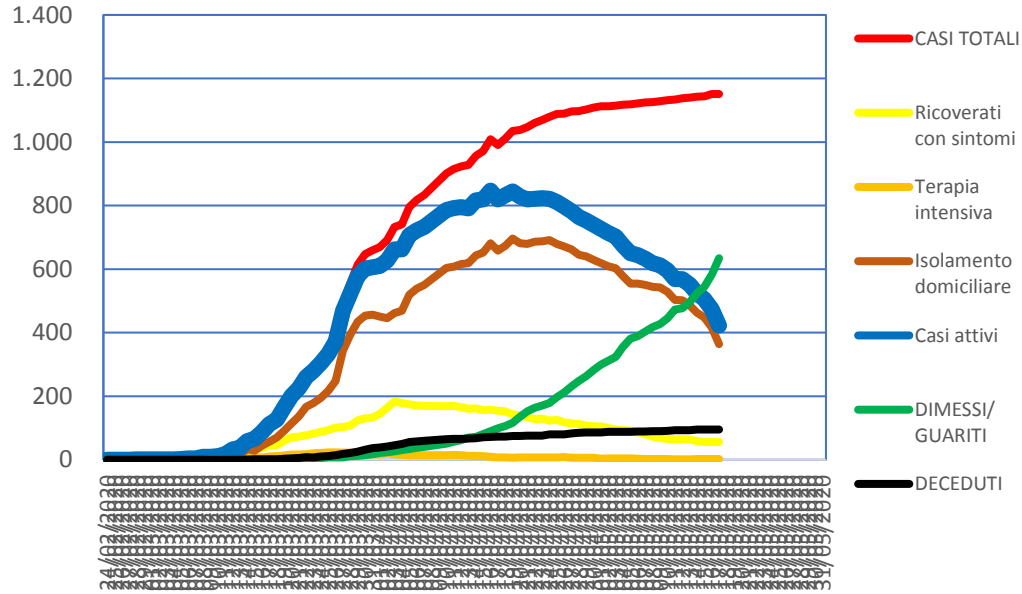


## BASILICATA (Incrementi settimanali)

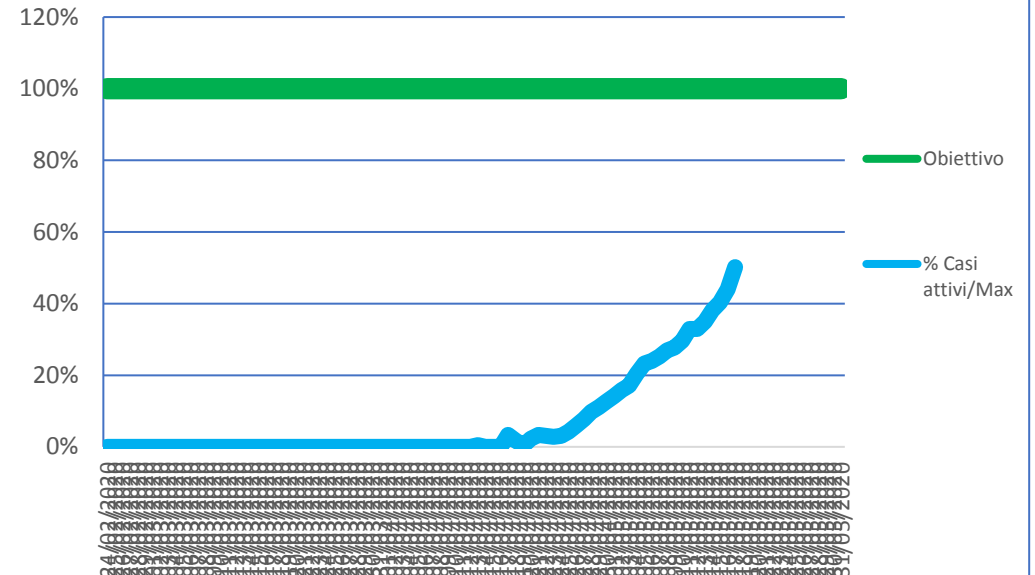


# CALABRIA

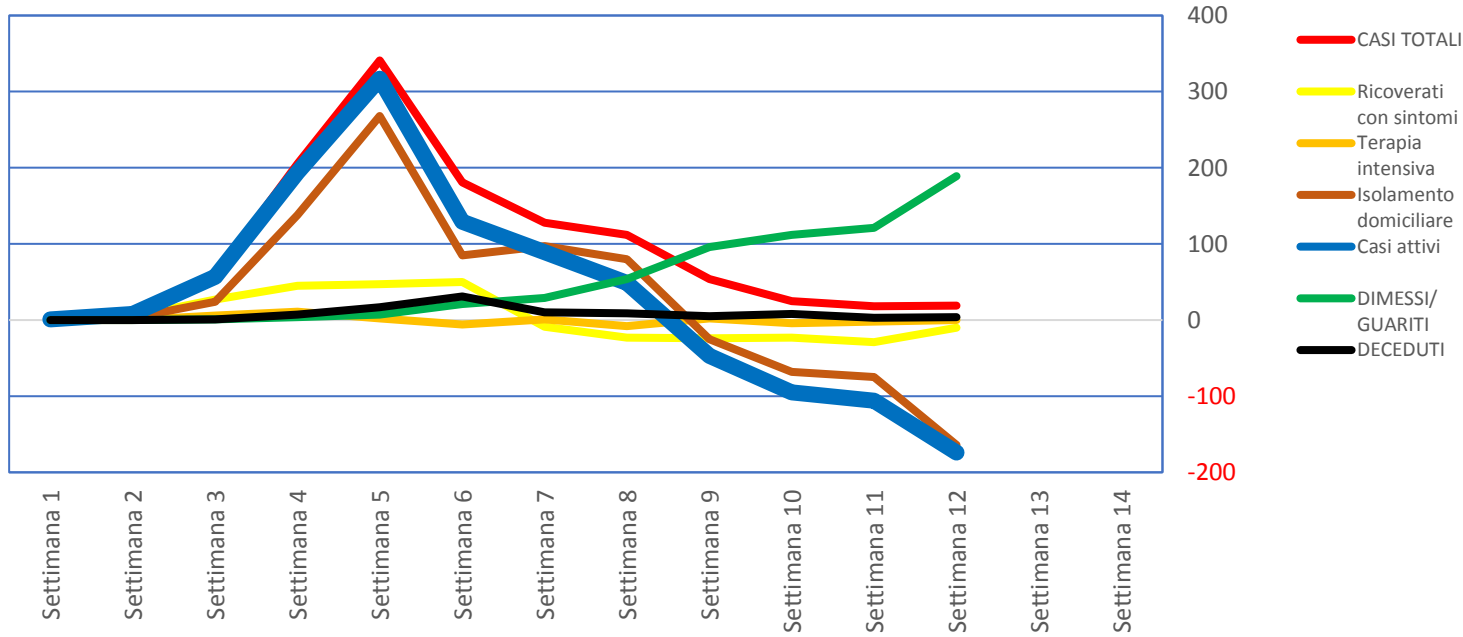
## CALABRIA (cumulativo)



## CALABRIA (% Casi attivi/Max)

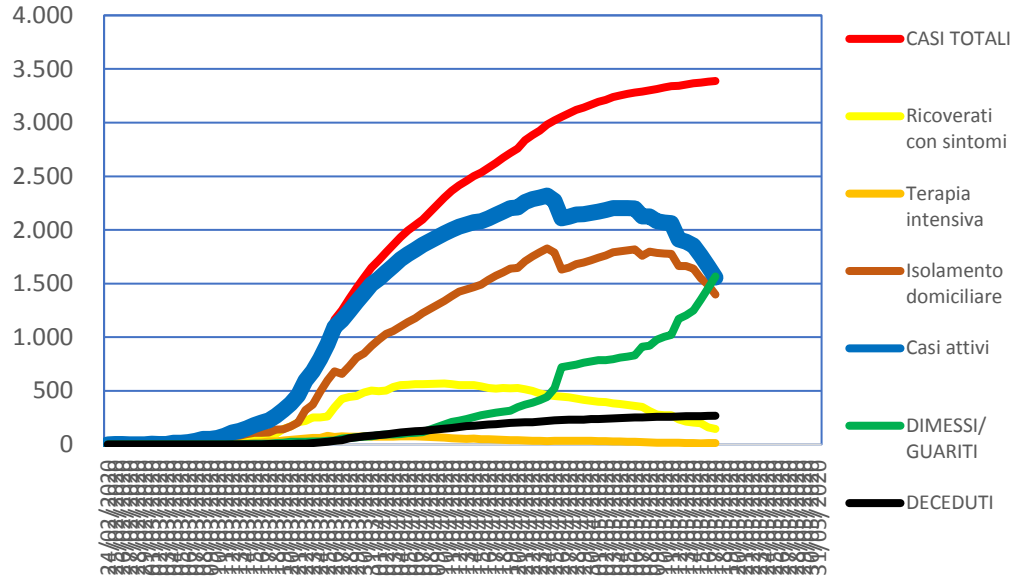


## CALABRIA (Incrementi settimanali)

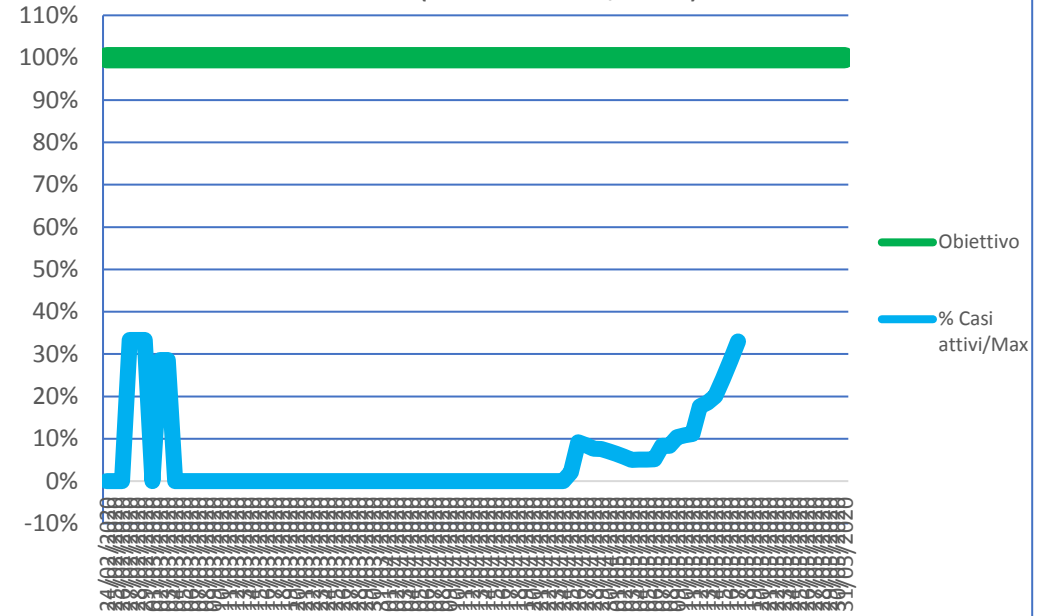


# SICILIA

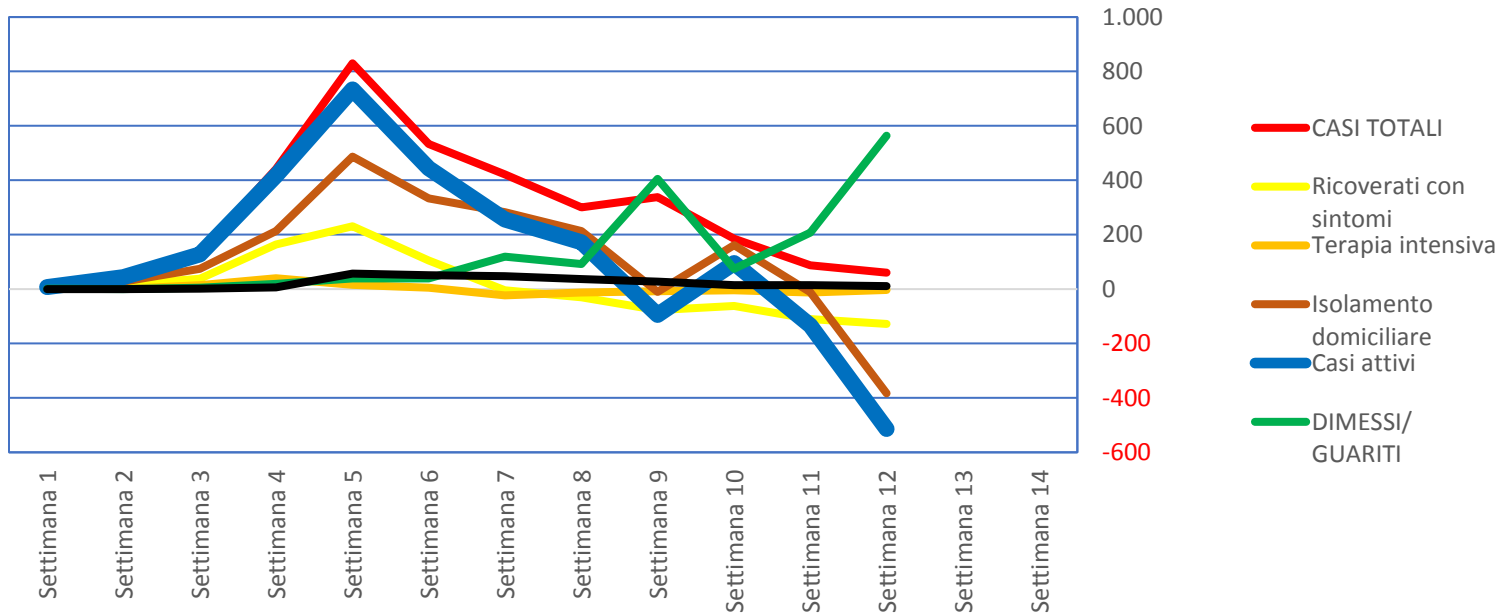
## SICILIA (cumulativo)



## SICILIA (% Casi attivi/Max)



## SICILIA (Incrementi settimanali)



# SARDEGNA

